

# Monthly Report on Short-term Transactions of Electricity in India

March, 2021



Economics Division  
Central Electricity Regulatory Commission  
36, Janpath, Chanderlok Building



# Contents

S.No.	Contents	Page No
	Contents	i
	List of Tables and Figures	ii
	Abbreviations	iii
1	Introduction	1
2	Volume of Short-term Transactions of Electricity	1
3	Price of Short-term Transactions of Electricity	3
3.1	<i>Price of electricity transacted through Traders</i>	3
3.2	<i>Price of electricity transacted through Power Exchanges</i>	3
3.3	<i>Price of electricity transacted through DSM</i>	3
4	Trading Margin	3
5	Volume of Short-term Transactions of Electricity (Regional Entity-wise)	4
6	Congestion on Inter-State Transmission Corridor for Day-Ahead Market and Real Time Market on Power Exchanges	5
7	Volume and Price of Renewable Energy Certificates (RECs)	5
8	Inferences	6

<b>S.No.</b>	<b>List of Tables and Figures</b>	<b>Page No.</b>
<b>I</b>	<b>List of Tables</b>	
Table-1	Volume of Short-term Transactions of Electricity in India	8
Table-2	Percentage Share of Electricity Transacted by Trading Licensees	10
Table-3	Price of Electricity Transacted through Traders	11
Table-4	Price of Electricity Transacted through Traders (Time-wise)	11
Table-5	Price of Electricity Transacted in Day Ahead Market through Power Exchanges	11
Table-6	Price of Electricity Transacted in Real Time Market through Power Exchanges	11
Table-7	Volume and Price of Electricity in Term Ahead Market of IEX	12
Table-8	Volume and Price of Electricity in Term Ahead Market of PXIL	12
Table-9	Volume and Price of Electricity in Green Term Ahead Market of IEX	12
Table-10	Volume and Price of Electricity in Green Term Ahead Market of PXIL	12
Table-11	Price of Electricity Transacted through DSM	12
Table-12	Volume of Electricity Sold through Bilateral	14
Table-13	Volume of Electricity Purchased through Bilateral	15
Table-14	Volume of Electricity Sold in Day Ahead Market through Power Exchanges	16
Table-15	Volume of Electricity Purchased in Day Ahead Market through Power Exchanges	18
Table-16	Volume of Electricity Sold in Real Time Market through Power Exchanges	19
Table-17	Volume of Electricity Purchased in Real Time Market through Power Exchanges	21
Table-18	Volume of Electricity Under drawal through DSM	22
Table-19	Volume of Electricity Over drawal through DSM	25
Table-20	Total Volume of Net Short-term Transactions of Electricity (Regional Entity-wise)	28
Table-21	Details of Congestion in Power Exchanges	31
Table-22	Volume of Short-term Transactions of Electricity in India (Day-wise)	32
Table-23	Price of Electricity in Day Ahead Market and DSM (Day-wise)	33
Table-24	Price of Electricity in Real Time Market (Day-wise)	34
Table-25	Volume of Short-term Transactions of Electricity (Regional Entity-wise)	35
<b>II</b>	<b>List of Figures</b>	
Figure-1	Volume of Various Kinds of Electricity Transactions in Total Electricity Generation	8
Figure-2	Volume of Short-term Transactions of Electricity	8
Figure-3	Volume transacted in different markets segments on Power Exchanges	9
Figure-4	Volume of Short-term Transactions of Electricity (Day-wise)	9
Figure-5	Percentage Share of Electricity Transacted by Trading Licensees	10
Figure-6	Price of Short-term Transactions Electricity	13
Figure-7	Price of Short-term Transactions Electricity (Day-wise)	13

## Abbreviations

Abbreviation	Expanded Version
ABSP_ANTP	Acme Bhiwadi Solar Power Private Limited, Anantpur
ACBIL	ACB ( India) Limited
ACP	Area Clearing Price
ACV	Area Clearing Volume
ACME_SLR	ACME Solar Power Project
ACME_RUMS	Acme Rewa Ultra Mega Solar Project
ADANI GREEN	Adani Green Energy Limited
ADY1_PVGD	Adyah Solar Energy Pvt Ltd., Block 1 Pavagada Solar Park
ADY2_PVGD	Adyah Solar Energy Pvt Ltd., Block 2 Pavagada Solar Park
ADY3_PVGD	Adyah Solar Energy Pvt Ltd., Block 3 Pavagada Solar Park
ADY6_PVGD	Adyah Solar Energy Pvt Ltd., Block 6 Pavagada Solar Park
ADY10_PVGD	Adyah Solar Energy Pvt Ltd., Block 10 Pavagada Solar Park
ADY13_PVGD	Adyah Solar Energy Pvt Ltd., Block 13 Pavagada Solar Park
AGEMPL BHUJ	Adani Green Energy (MP) Ltd., Bhuj
AHSP_ANTP	Acme Hisar Solar Power Private Limited, Anantpur
AKS_PVGD	ACME Kurukshetra Solar Energy Pvt. Ltd
AKSP_ANTP	Acme Karnal Solar Power Private Limited, Anantpur
ALFANAR_BHUJ	Alfanar Group Wind Project, Bhuj, Gujarat
AMPS Hazira	Arcelor Mittal Nippon Steel, Hazira
APTEL	Appellate Tribunal for Electricity
ARERJL_SLR	Adani Renewable Energy Park Rajasthan Ltd.
ARINSUM_RUMS	Solenergi Rewa Ultra Mega Solar Project
ARS_PVGD	ACME REWARI Solar Power Pvt Ltd.
ASEJTL_SLR	Adani Solar Energy Jodhpur Two Ltd.
AVAADA1_PVGD	Avaada Solar Energy Private Ltd., Pavagada Project 1
AVAADA2_PVGD	Avaada Solar Energy Private Ltd., Pavagada Project 2
AYANA_NPKUNTA	Ayana Power, NP Kunta
AZURE_ANTP	Azure Power, Anantpur
AZURE_PVGD	Azure Power, Pavagada
AZURE_SLR	Azure Power Solar Power Project
AZURE34_SLR	Azure Power 34 Pvt. Ltd. Solar Power Project
AZURE43_SLR	Azure Power Forty Three Private Limited
BALCO	Bharat Aluminum Company Limited
BARC	Bhabha Atomic Research Centre
BBMB	Bhakra Beas Management Board
BETAM_TCN	Betam Wind Energy Private Limited, Tuticorin
BHADRAVATHI HVDC	Bhadravathi High Voltage Direct Current Link
BRBCL	Bhartiya Rail Bijlee Company Limited
CEA	Central Electricity Authority
CERC	Central Electricity Regulatory Commission
CGPL	Coastal Gujarat Power Limited
CHUKHA HEP	Chhukha Hydroelectric Project, Bhutan
CHUZACHEN HEP	Chuzachen Hydro Electric Power Project
CLEAN_SLR	Clean Solar Power Pvt. Ltd
COASTGEN	Coastal Energen Private Limited
DAGACHU	Dagachhu Hydro Power Corporation
DAM	Day Ahead Market
DB POWER	Diligent Power Pvt. Ltd.

DCPP	Donga Mahua Captive Power Plant
DGEN MEGA POWER	DGEN Mega Power Project
DHARIWAL POWER	Dhariwal Power Station
DIKCHU HEP	Dikchu Hydro-electric Project, Sikkim
DOYANG HEP	Doyang Hydro Electric Project
DSM	Deviation Settlement Mechanism
DVC	Damodar Valley Corporation
EMCO	EMCO Energy Limited
ESSAR POWER	Essar Power Limited
ESSAR STEEL	Essar Steel Ltd
FORTUM1_PVGD	Fortum Finnsurya Energy Private Ltd, Pavagada Project 1
FORTUM2_PVGD	Fortum Finnsurya Energy Private Ltd, Pavagada Project 2
FRV_ANTP	Fotowatio Renewable Ventures, Anantapur
FRV_NPK	Fotowatio Renewable Ventures, NP Kunta
GIWEL_BHUJ	Green infra wind energy Limited, Bhuj
GIWEL_TCN	Green Infra Wind Energy Limited, Tuticorin
GMR CHHATTISGARH	GMR Chhattisgarh Energy Limited
GMR KAMALANGA	GMR Kamalanga Energy Ltd.
G-TAM	Green Term Ahead Market
HVDC ALPD	Alipurduar High Voltage Direct Current Link
HVDC CHAMPA	Champa-Kurukshetra High Voltage Direct Current Link
HVDC PUS	Pasauli High Voltage Direct Current Link
HVDC RAIGARH	Raigarh-Pugalur High Voltage Direct Current Link
IEX	Indian Energy Exchange Limited
IGSTPS	Indira Gandhi Super Thermal Power Station Jhajjar
IL&FS	Infrastructure Leasing & Financial Services Limited
INOX_BHUJ	INOX Wind Limited, Bhuj, Gujarat
J&K	Jammu & Kashmir
JAYPEE NIGRIE	Jaypee Nigrie Super Thermal Power Project
JHABUA POWER MP	Jhabua Thermal Power Project
JINDAL POWER	Jindal Power Limited
JINDAL STAGE-II	Jindal Power Ltd Stage II
JITPL	Jindal India Thermal Power Ltd.
JORETHANG	Jorethang Loop Hydroelectric Power Project
KAPP 3&4	Kakrapar Atomic Power Station Unit 3 & 4
KARCHAM WANGTOO	Karcham Wangtoo H.E. Project
KORBA WEST POWER	Korba West Power Company Limited
KOTESHWAR	Koteshwar Hydro Power project
KREDL_PVGD	Karnataka Renewable Energy Development Ltd, Pavagada
KSK MAHANADI	KSK Mahanadi Power Ltd
KSMPL_SLR	Kilaj Solar (Maharashtra) Private Limited
KURICHU HEP	Kurichhu Hydro-electric Power Station, Bhutan
LANKO_AMK	Lanco Amarkantak Power Private Limited
LANKO BUDHIL	Lanco Budhil Hydro Power Private Limited
LANKOKONDAPALLY	Lanco Kondapally Power Private Limited
LOKTAK	Loktak Power Project
MAHINDRA_RUMS	Mahindra Rewa Ultra Mega Solar Project
MAHOBASL	Mahoba Solar Power Project
MALANA	Malana Hydroelectric Plant
MANGDECHU HEP	Mangdechhu Hydroelectric Project, Mangdechhu River, Bhutan

Maruti Coal	Maruti Clean Coal and Power Limited
MB POWER	MB Power Ltd
MEENAKSHI	Meenakshi Energy Private Limited
MP	Madhya Pradesh
MTPS II	Muzaffarpur Thermal Power Station – Stage II
MYTRAH_TCEN	Mytrah Energy (India) Private Limited, Tuticorin
Mus	Million Units
NAPP	Narora Atomic Power Plant
NEEPCO	North Eastern Electric Power Corporation Limited
NEP	Nepal
NFL	National Fertilisers Limited
NHPC STATIONS	National Hydro Electric Power Corporation Ltd. Stations
NJPC	Nathpa Jhakri Hydroelectric Power Station
NLC	Neyveli Lignite Corporation Limited
NLDC	National Load Dispatch Centre
NPGC	Nabinagar Power Generating Company (Pvt.) Limited
NSPCL	NTPC - SAIL Power Company Private Limited
NTECL Vallur	NTPC Tamil Nadu Energy Company Limited Vallur
NTPC_ANTP	NTPC Anantapur
NTPC STATIONS	National Thermal Power Corporation Ltd. Stations
NTPL	NLC Tamil Nadu Power Limited
NVVN	NTPC Vidyut Vyapar Nigam Limited
ONGC Platana	ONGC Tripura Power Company
OPGC	Odisha Power Generation Corporation
ORANGE_TCEN	Orange Renewable Power Pvt. Ltd, Tuticorin
OSTRO	Ostro Energy Private Limited
OTC	Over The Counter
PARAM_PVGD	Parampujya Solar Energy Private Ltd
PARE HEP	Pare hydroelectric project, Arunachal Pradesh
PX	Power Exchange
PXIL	Power Exchange India Limited
RAIL	Indian Railways
RAMPUR HEP	Rampur Hydro Electric Power Project
RANGIT HEP	Rangit Hydroelectric power project
RANGANADI HEP	Ranganadi Hydro Electric Power Project, Arunachal Pradesh
RAP-B	Rajasthan Atomic Power Plant-B
RAP-C	Rajasthan Atomic Power Plant-C
REC	Renewable Energy Certificate
REGL	Raigarh Energy Generation Limited
RENEW_BHACHAU	ReNew Power Limited, Bhachau
RENEW_BHUJ	ReNew Power Limited, Bhuj
RENEW_PVGD	ReNew Wind Energy (TN2) Private Limited
RENEW_SLR	Renew Solar
RENEW_SLR_BKN	Renew Solar Bikaner
RGPPL_IR	Ratnagiri Gas and Power Private Ltd., supply to Indian Railways
RGPPL_OTHER	Ratnagiri Gas and Power Private Limited
RLDC	Regional Load Dispatch Centre
RPREL	Raipur Energen Limited
RTC	Round The Clock
RTM	Real Time Market

Sasan UMPP	Sasan Ultra Mega Power Project
SB_SLR	Soft Bank Solar
SBG CLEANTECH_SLR	SBG Cleantech Ltd
SBG_NPK	SB Energy Solar Private Limited, NP Kunta
SBG_PVGD	SB Energy Solar Private Limited, Pavagada
SEMBCORP	Sembcorp Gayatri Power Ltd
SHREE CEMENT	Shree Cement Limited
SIMHAPURI	Simhapuri Energy Private Limited
SKS Power	SKS Power Generation Chhattisgarh Limited
SINGOLI BHATWARI HEP	Singoli-Bhatwari Hydroelectric Project, Uttarakhand
SPECTRUM	Spectrum Power Generation Ltd
SPRNG_NPKUNTA	Sprng Energy, NP Kunta
TALA HEP	Tala Hydroelectric Project, Bhutan
TASHIDENG HEP	Tashiding Hydro Electric Project, Sikkim
TATA_ANTP	TATA Power Anantapur
TATA_PVGD	Tata Power Renewable Energy Ltd
TATA_SLR	Tata Solar
TEESTA STG3	Teesta Stage 3 Hydro Power Project
TEHRI	Tehri Hydro Electric Power Project
TAM	Term Ahead Market
THERMAL POWERTECH	Thermal Powertech Corporation India Limited
URI-II	Uri-II Hydropower Project
VINDHYACHAL HVDC	Vindhyachal High Voltage Direct Current Link
YARROW_PVGD	Yarrow Infra Structure Private Ltd

## 1.Introduction

1.1. A well-functioning electricity market requires an effective market monitoring process. As part of the market monitoring process, the monthly report on short-term transactions of electricity, is being prepared and posted on the website of CERC since August 2008. Here, “short-term transactions of electricity” refers to the contracts of less than one year period, for electricity transacted (inter-State) through inter-State Trading Licensees and directly by the Distribution Licensees, Power Exchanges (Indian Energy Exchange Ltd (IEX) and Power Exchange India Ltd (PXIL), and Deviation Settlement Mechanism (DSM). The objectives of the report are: (i) to observe the trends in volume and price of the short-term transactions of electricity; (ii) to analyse competition among the market players; (iii) to analyse effect of congestion on volume of electricity transacted through power exchanges; (iv) to provide information on volume and price of Renewable Energy Certificates (RECs) transacted through power exchanges; and (v) to disclose/disseminate all relevant market information. The details of the report for the month of **March, 2021** are as under:

## 2. Volume of Short-term Transactions of Electricity

2.1. During March 2021, total electricity generation excluding generation from renewable and captive power plants in India was 118602.70 MUs (Table-1). Of the total electricity generation, 13.00% was transacted through short-term, comprising of 6.72% through Day Ahead Market (DAM) and Real Time Market (RTM) of power exchanges, followed by 4.70% through bilateral (through traders and term-ahead contracts on power exchanges and directly between distribution companies) and 1.57% through DSM (Table-1 & Figure-1).

2.2. Of the total short-term transactions (15413.54 MUs), the electricity transacted in DAM and RTM of power exchanges constitutes 51.73%, followed by 36.16% through bilateral (29.51% through traders and term-ahead contracts on power exchanges and 6.65% directly between distribution companies) and 12.10% through DSM (Table-1 & Figure-2). Daily volume of short-term transactions is shown in Table-21 & Figure-4.

2.3. Of the total volume of electricity transacted through power exchanges, 75.83% of the volume was transacted in DAM, followed by 16.34% in RTM and 7.83% in Term Ahead Market (TAM) (including G-TAM) (Figure-3).



2.4. The percentage share of electricity traded by each trading licensee in the total volume of electricity traded by all the trading licensees is provided in Table-2 & Figure-5. The volume of electricity transacted by the trading licensees includes bilateral transactions and the transactions undertaken through power exchanges. There were 33 trading licensees as on March 2021. In March 2021, 22 trading licensees were engaged in short term trading. Top 5 trading licensees had a share of 76.29% in the total volume traded by all the licensees. These are PTC India Ltd., NTPC Vidyut Vyapar Nigam Ltd., Adani Enterprises Ltd., Tata Power Trading Company (P) Ltd. and GMR Energy Trading Ltd.

2.5. Herfindahl-Hirschman Index (HHI) has been used for measuring the competition among the trading licensees. Increase in the HHI generally indicates decrease in competition and increase of market concentration, and vice versa. The HHI below 0.15 indicates non-concentration, HHI between 0.15 and 0.25 indicates moderate concentration and HHI above 0.25 indicates high concentration. The HHI has been computed based on the volume of electricity traded (inter-State & intra-State) by inter-State trading licensees, and it was 0.1767 for the month of March 2021, which indicates moderate concentration of market power (Table-2).

2.6. The volume of electricity transacted in the DAM of IEX and PXIL was 6548.94 MUs and 10.94 MUs respectively. The volume of total buy bids and sell bids was 8319.92 MUs and 8386.11 MUs respectively in IEX, while the same was 60.22 MUs and 101.54 MUs respectively in PXIL.

2.7. The volume of electricity transacted in the RTM of IEX was 1413.96 MUs. No electricity was transacted in the RTM of PXIL. The volume of total buy bids and sell bids was 2000.02 MUs and 2519.31 MUs respectively in IEX, while there were no bids in PXIL. The variation in the volume of buy bids and sell bids placed through power exchanges shows variation in the demand and supply position.

2.8. The volume of electricity transacted in the TAM of IEX and PXIL was 234.18 MUs and 388.54 MUs respectively (Table-7 & Table-8). The volume of electricity transacted in the Green Term Ahead Market (G-TAM) of IEX and PXIL was 54.20 MUs and 0.39 MUs respectively (Table-9 & Table-10).

### 3. Price of Short-term Transactions of Electricity

3.1. **Price of electricity transacted through Traders:** The minimum, maximum and weighted average sale prices have been computed for the electricity transacted through traders and the sale prices were ₹2.50/kWh, ₹4.77/kWh and ₹3.12/kWh respectively (Table-3). The weighted average sale prices were also computed for the electricity transacted during Round the Clock (RTC) and Off-peak periods separately, and the sale prices were ₹3.14/kWh and ₹2.87/kWh respectively. No electricity was transacted through traders during the Peak periods (Table-4).

3.2. **Price of electricity transacted through Power Exchanges:** The minimum, maximum and weighted average prices for the electricity transacted in the DAM of IEX were ₹2.34/kWh, ₹9.88/kWh and ₹4.11/kWh respectively. These prices in the DAM of PXIL were ₹2.62/kWh, ₹7.80/kWh and ₹4.19/kWh respectively (Table-5). The minimum, maximum and weighted average prices for the electricity transacted in the RTM of IEX were ₹1.43/kWh, ₹19.99/kWh and ₹3.85/kWh respectively (Table-6). The price of electricity transacted in the TAM of IEX and PXIL was ₹3.73/kWh and ₹3.79/kWh respectively (Table-7 and Table-8). The price of electricity transacted in the G-TAM of IEX and PXIL was ₹4.68/kWh and ₹4.61/kWh respectively (Table-9 and Table-10).

3.3. **Price of electricity transacted through DSM:** The minimum, maximum and average price of DSM was ₹0.00/kWh and ₹8.00/kWh ₹3.53/kWh respectively (Table-11).

3.4. The prices of electricity transacted through trading licensees, power exchanges and DSM and their comparison is shown in Table-23 & 24, Figure-6 & 7.

### 4. Trading Margin

4.1. As per the CERC (Procedure, Terms and Conditions for grant of trading licence and other related matters) Regulations 2020, the trading licensees are allowed to charge trading margin of not less than 0 paise/kWh and upto 7 paise/kWh. The weighted average trading margin charged by the trading licensees for bilateral transactions during the month was ₹0.025/kWh.

## 5. Volume of Short-term Transactions of Electricity (Regional Entity<sup>1</sup>-Wise)

5.1. Of the total bilateral transactions, top 5 regional entities sold 44.46% of the volume, and these were Delhi, Gujarat, Haryana, Raipur Energen Limited and Sembcorp Gayatri Power Ltd. Top 5 regional entities purchased 63.15% of the volume, and these were Tamil Nadu, Gujarat, Telangana, Himachal Pradesh and West Bengal (Table-12 & 13).

5.2. Of the total DAM transactions of power exchanges, top 5 regional entities sold 46.00% of the volume, and these were Uttar Pradesh, Madhya Pradesh, Rajasthan, Sembcorp Gayatri Power Ltd. and Bihar. Top 5 regional entities purchased 74.82% of the volume, and these were Telangana, Gujarat, Andhra Pradesh, Maharashtra and Tamil Nadu (Table-14 & 15).

5.3. Of the total RTM transactions of power exchanges, top 5 regional entities sold 61.13% of the volume, and these were Madhya Pradesh, West Bengal, Rajasthan, Damodar Valley Corporation and Uttar Pradesh. Top 5 regional entities purchased 61.56% of the volume, and these were Telangana, Jammu & Kashmir, Andhra Pradesh, Rajasthan and Odisha (Table-16 & 17).

5.4. Of the total DSM transactions, top 5 regional entities under drew 25.27% of the volume, and these were NTPC Stations (Western Region), Uttar Pradesh, Madhya Pradesh, Kakrapar Atomic Power Station Unit 3 & 4 and Rajasthan (Table-18). Top 5 regional entities overdrew 21.75% of the volume, and these were Rajasthan, Karnataka, West Bengal, Gujarat and NTPC Stations (Northern Region) (Table-19).

5.5. The total volume of net short-term transactions of electricity (Regional entity-wise) i.e. volume of net transactions through bilateral, power exchanges and DSM is shown in Table-20 & 25. Top 5 electricity selling regional entities were Madhya Pradesh, Uttar Pradesh, Sembcorp Gayatri Power Ltd., Delhi and Raipur Energen Limited. Top 5 electricity purchasing regional entities were Tamil Nadu, Telangana, Gujarat, Andhra Pradesh and Maharashtra.

---

<sup>1</sup> In case of a state, the entities which are "selling" also include generators connected to state grid and the entities which are "buying" also include open access consumers.

## **6. Congestion<sup>2</sup> on Inter-State Transmission Corridor for Day-Ahead Market and Real Time Market on Power Exchanges**

6.1. The power exchanges use a price discovery mechanism in which the aggregate demand and supply are matched to arrive at an unconstrained market price and volume. This step assumes that there is no congestion in the inter-State transmission system between different regions. However, in reality, the system operator (NLDC) in coordination with RLDCs limits the flow (due to congestion) in the inter-State transmission system. In such a situation, power exchanges adopt a mechanism called “Market Splitting”<sup>3</sup>.

6.2. In the month of March 2021, congestion occurred in both DAM and RTM of IEX. There was no congestion on PXIL. The details of congestion are shown in Table-21. The volume of electricity that could not be cleared due to congestion & other reasons and could not be transacted through power exchanges is the difference between unconstrained cleared volume and actual cleared volume.

6.3. During the month, the volume of electricity that could not be cleared in DAM and RTM on IEX was 0.37% and 0.51% of the unconstrained cleared volume respectively. In terms of time, congestion occurred was 9.81% in the DAM and 6.82% in the RTM on IEX (Table-21).

## **7. Volume and Price of Renewable Energy Certificates (RECs)**

7.1. The concept of Renewable Energy Certificates (RECs) seeks to address mismatch between availability of renewable energy and the requirement of the obligated entities to meet their renewable purchase obligation by purchasing green attributes of renewable energy

---

<sup>2</sup> “Congestion” means a situation where the demand for transmission capacity exceeds the available transfer capability

<sup>3</sup> “Market Splitting” is a mechanism adopted by Power Exchange where the market is split in the event of transmission congestion, into predetermined (by NLDC) bid areas or zones, which are cleared individually at their respective area prices such that the energy balance in every bid area is reached based upon the demand and supply in individual bid areas and using the available transmission corridor capacity between various bid areas simultaneously”  
As a result of this market splitting the price of electricity in the importing region, where demand for electricity is more than supply, becomes relatively higher than the price of electricity in the exporting region.

remotely located in the form of RECs. The REC mechanism is a market based instrument, to promote renewable sources of energy and development of electricity market.

7.2. One REC is equivalent to 1 MWh electricity injected into the grid from renewable energy sources. The REC is exchanged only in the power exchanges approved by CERC within the band of a floor price and forbearance (ceiling) price as notified by CERC from time to time. The first REC trading was held on power exchanges in May, 2011.

7.3. There were no transactions of REC in the month of March 2021 as the scheduled trading was postponed by Hon'ble APTEL in matter of the CERC order fixing new floor and forbearance price for both Solar and Non-solar RECs.

## **8. Inferences:**

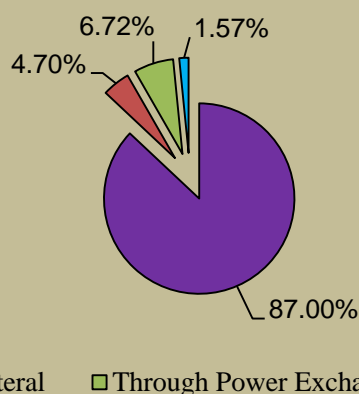
- (1) The percentage of short-term transactions of electricity to total electricity generation was 13.00%.
- (2) Of the total short-term transactions, the electricity transacted in DAM and RTM of power exchanges constitutes 51.73%, followed by 36.16% through bilateral (29.51% through traders and term-ahead contracts on power exchanges and 6.65% directly between distribution companies) and 12.10% through DSM.
- (3) Of the total volume of electricity transacted through power exchanges, 75.83% of the volume was transacted in DAM, followed by 16.34% in RTM and 7.83% in TAM (including G-TAM).
- (4) Top 5 trading licensees had a share of 76.29% in the total volume traded by all the trading licensees.
- (5) The Herfindahl Hirschman Index computed for the volume of electricity traded by trading licensees was 0.1767, indicating moderate concentration of market power.
- (6) The weighted average price of electricity transacted through trading licensees was ₹3.12/kWh.

- (7) The weighted average price of electricity transacted in the TAM of IEX and PXIL was ₹3.73/kWh and ₹3.79/kWh respectively. The weighted average price of electricity transacted in the G-TAM of IEX and PXIL was ₹4.68/kWh and ₹4.61/kWh respectively.
- (8) The weighted average price of electricity transacted in DAM of IEX and PXIL was ₹4.11/kWh and ₹4.19/kWh. The weighted average price of electricity transacted in RTM of IEX was ₹3.85/kWh. No electricity was transacted in the RTM of PXIL.
- (9) The average price of electricity transacted through DSM was ₹3.53/kWh.
- (10) The weighted average trading margin charged by the trading licensees for bilateral transactions was ₹0.025/kWh. The trading margin charged during the month was in line with the Trading Margin Regulations 2020.
- (11) Top 5 electricity selling regional entities were Madhya Pradesh, Uttar Pradesh, Sembcorp Gayatri Power Ltd., Delhi and Raipur Energen Limited. Top 5 electricity purchasing regional entities were Tamil Nadu, Telangana, Gujarat, Andhra Pradesh and Maharashtra.
- (12) . In the month of March 2021, congestion occurred in both DAM and RTM of IEX. During the month, the volume of electricity that could not be cleared in DAM and RTM on IEX was 0.37% and 0.51% of the unconstrained cleared volume respectively. In terms of time, congestion occurred was 9.81% in the DAM and 6.82% in the RTM on IEX
- (13) There were no transactions of REC on both the power exchanges in the month of March 2021, as the scheduled REC trading sessions were postponed by the order of Hon'ble APTEL.

Table-1: VOLUME OF SHORT-TERM TRANSACTIONS OF ELECTRICITY (ALL INDIA), MARCH 2021				
Sr. No	Short-term transactions	Volume (MUs)	% to Volume of short-term transactions	% to Total Generation
1	Bilateral	5574.29	36.16	4.70
	(i) Through Traders and PXs	4548.95	29.51	3.84
	(ii) Direct	1025.34	6.65	0.86
2	Through Power Exchanges	7973.85	51.73	6.72
	(i) IEX			
	(a) DAM	6548.94	42.49	5.52
	(b) RTM	1413.96	9.17	1.19
	(ii)PXIL			
	(a) DAM	10.94	0.07	0.01
	(b) RTM	0.00	0.00	0.00
3	Through DSM	1865.40	12.10	1.57
	<b>Total</b>	<b>15413.54</b>	<b>-</b>	<b>13.00</b>
	<b>Total Generation</b>	<b>118602.70</b>	<b>-</b>	<b>-</b>

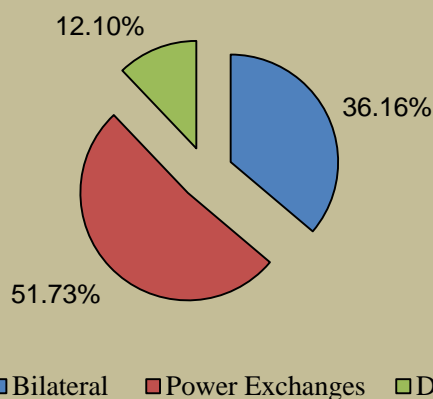
Source: NLDC

**Figure-1: Volume of Various Kinds of Electricity Transactions in Total Electricity Generation, March 2021**



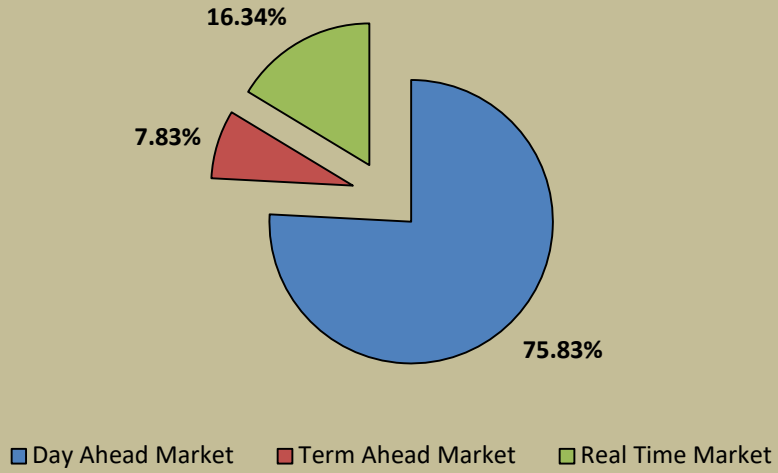
■ Long-term ■ Bilateral ■ Through Power Exchanges ■ Through DSM

**Figure-2: Volume of Short-term Transactions of Electricity, March 2021**

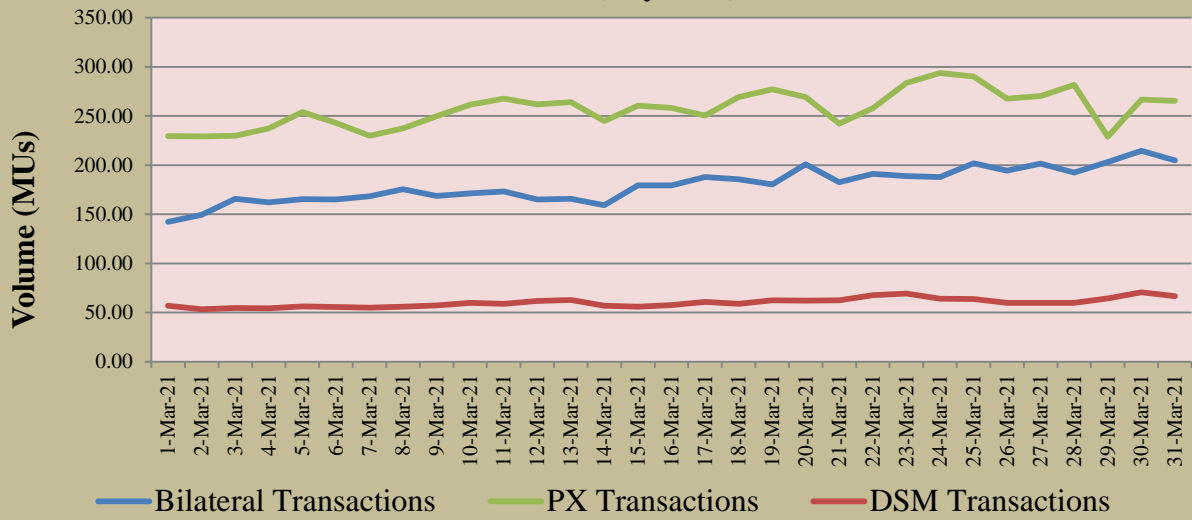


■ Bilateral ■ Power Exchanges ■ DSM

**Figure-3: Volume transacted in different markets segments on Power Exchanges, March 2021**



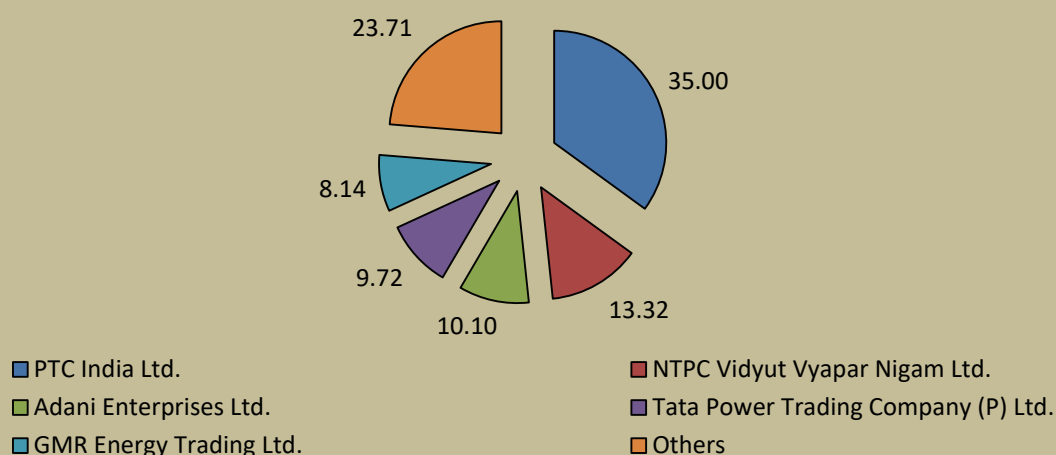
**Figure-4: Volume of Short-term Transactions of Electricity, March 2021 (Day-wise)**





<b>Table-2: PERCENTAGE SHARE OF ELECTRICITY TRANSACTED BY TRADING LICENSEES, MARCH 2021</b>			
<b>Sr.No</b>	<b>Name of the Trading Licensee</b>	<b>% Share in total Volume transacted by Trading Licensees</b>	<b>Herfindahl-Hirschman Index</b>
1	PTC India Ltd.	35.00	0.1225
2	NTPC Vidyut Vyapar Nigam Ltd.	13.32	0.0177
3	Adani Enterprises Ltd.	10.10	0.0102
4	Tata Power Trading Company (P) Ltd.	9.72	0.0095
5	GMR Energy Trading Ltd.	8.14	0.0066
6	Manikaran Power Ltd.	7.44	0.0055
7	Arunachal Pradesh Power Corporation (P) ltd	4.53	0.0020
8	Kreate Energy (I) Pvt. Ltd.	4.10	0.0017
9	JSW Power Trading Company Ltd	2.05	0.0004
10	Knowledge Infrastructure Systems (P) Ltd	1.28	0.0002
11	Essar Electric Power Development Corp. Ltd.	1.07	0.0001
12	National Energy Trading & Services Ltd.	1.04	0.0001
13	RPG Power Trading Company Ltd.	0.46	0.0000
14	Instinct Infra & Power Ltd.	0.40	0.0000
15	Refex Energy Limited	0.33	0.0000
16	NLC India Ltd.	0.28	0.0000
17	Gita Power & Infrastructure Private Limited	0.26	0.0000
18	Statkraft Markets Pvt. Ltd.	0.23	0.0000
19	Abja Power Private Limited	0.13	0.0000
20	Shree Cement Ltd.	0.09	0.0000
21	Customized Energy Solutions India (P) Ltd.	0.02	0.0000
22	Phillip Commodities India (P) Ltd.	0.01	0.0000
<b>TOTAL</b>		<b>100.00%</b>	<b>0.1767</b>
<b>Top 5 trading licensees</b>		<b>76.29%</b>	
<i>Note 1: Volume of electricity transacted by the trading licensees includes bilateral transactions (inter-state &amp; intra-state) and the transactions undertaken through power exchanges.</i>			
<i>Note 2: Volume of electricity transacted by Global Energy Ltd is not included.</i>			
<i>Source: Information submitted by trading licensees</i>			

**Figure 5: Percentage Share of Electricity Transacted by Trading Licensees, March 2021**



<b>Table-3: PRICE OF ELECTRICITY TRANSACTED THROUGH TRADERS, MARCH 2021</b>		
<b>Sr.No</b>	<b>Item</b>	<b>Sale Price of Traders (₹/kWh)</b>
1	Minimum	2.50
2	Maximum	4.77
3	Weighted Average	3.12

*Source: Information submitted by trading licensees*

<b>Table-4: PRICE OF ELECTRICITY TRANSACTED THROUGH TRADERS (TIME-WISE), MARCH 2021</b>		
<b>Sr.No</b>	<b>Period of Trade</b>	<b>Sale Price of Traders (₹/kWh)</b>
1	RTC	3.14
2	PEAK	-
3	OFF PEAK	2.87

*Source: Information submitted by trading licensees*

<b>Table-5: PRICE OF ELECTRICITY TRANSACTED IN DAY AHEAD MARKET THROUGH POWER EXCHANGES, MARCH 2021</b>			
<b>Sr.No</b>	<b>ACP</b>	<b>Price in IEX (₹/kWh)</b>	<b>Price in PXIL (₹/kWh)</b>
1	Minimum	2.34	2.62
2	Maximum	9.88	7.80
3	Weighted Average	4.11	4.19

*Source: Information submitted by IEX and PXIL*

<b>Table-6: PRICE OF ELECTRICITY TRANSACTED IN REAL TIME MARKET THROUGH POWER EXCHANGES, MARCH 2021</b>			
<b>Sr.No</b>	<b>ACP</b>	<b>Price in IEX (₹/kWh)</b>	<b>Price in PXIL (₹/kWh)</b>
1	Minimum	1.43	-
2	Maximum	19.99	-
3	Weighted Average	3.85	-

*Source: Information submitted by IEX and PXIL*

<b>Table-7: VOLUME AND PRICE OF ELECTRICITY IN TERM AHEAD MARKET OF IEX, MARCH 2021</b>			
<b>Sr.No</b>	<b>Term ahead contracts</b>	<b>Actual Scheduled Volume (MUs)</b>	<b>Weighted Average Price (₹/kWh)</b>
1	Intra-Day Contracts	3.62	4.51
2	Day Ahead Contingency Contracts	46.66	3.66
3	Daily Contracts	183.90	3.73
	<b>Total</b>	<b>234.18</b>	<b>3.73</b>

Source: IEX

<b>Table-8: VOLUME AND PRICE OF ELECTRICITY IN TERM AHEAD MARKET OF PXIL, MARCH 2021</b>			
<b>Sr.No</b>	<b>Term ahead contracts</b>	<b>Actual Scheduled Volume (MUs)</b>	<b>Weighted Average Price (₹/kWh)</b>
1	Intra-Day Contracts	12.07	5.03
2	Any Day(s) Contracts	376.47	3.75
	<b>Total</b>	<b>388.54</b>	<b>3.79</b>

Source: PXIL

<b>Table-9: VOLUME AND PRICE OF ELECTRICITY IN GREEN TERM AHEAD MARKET OF IEX, MARCH 2021</b>			
<b>Sr.No</b>	<b>Green Term ahead contracts</b>	<b>Actual Scheduled Volume (MUs)</b>	<b>Weighted Average Price (₹/kWh)</b>
1	Intra-Day Contracts	0.350	5.10
2	Day Ahead Contingency Contracts	53.85	4.68
	<b>Total</b>	<b>54.20</b>	<b>4.68</b>

Source: IEX

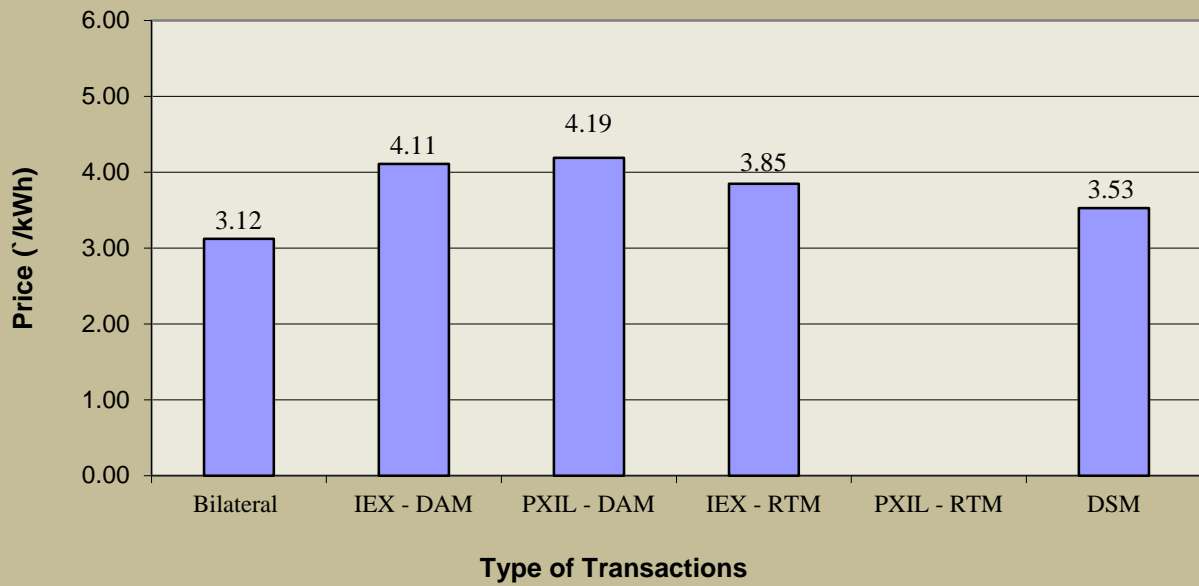
<b>Table-10: VOLUME AND PRICE OF ELECTRICITY IN GREEN TERM AHEAD MARKET OF PXIL, MARCH 2021</b>			
<b>Sr.No</b>	<b>Green Term ahead contracts</b>	<b>Actual Scheduled Volume (MUs)</b>	<b>Weighted Average Price (₹/kWh)</b>
1	Intra-Day Contracts	0.39	4.61
	<b>Total</b>	<b>0.39</b>	<b>4.61</b>

Source: PXIL

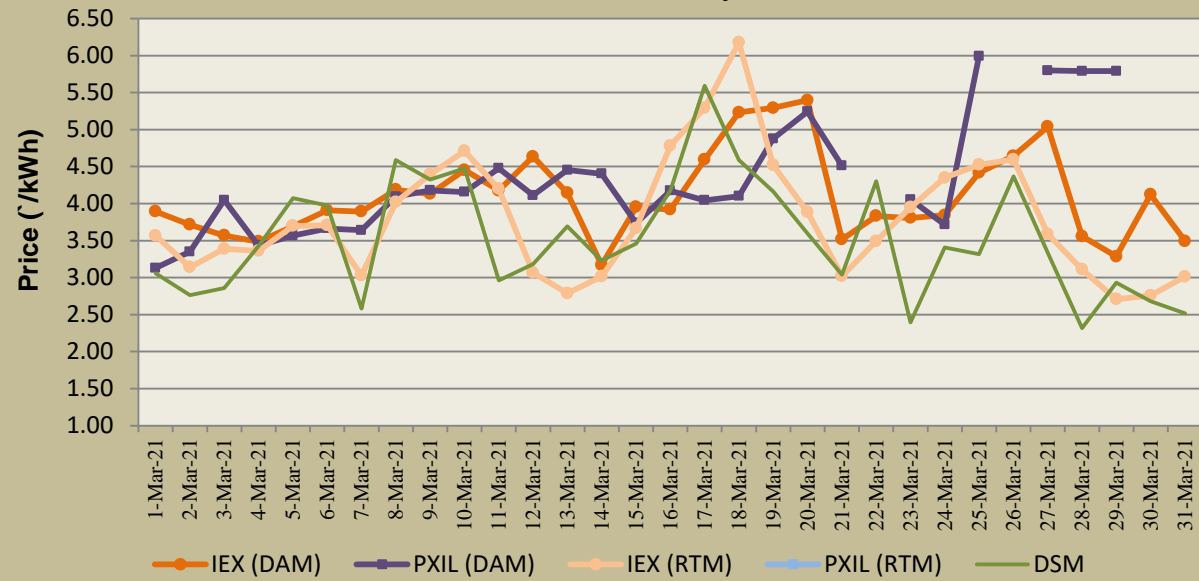
<b>Table-11: PRICE OF ELECTRICITY TRANSACTED THROUGH DSM, MARCH 2021</b>		
<b>Sr.No</b>	<b>Item</b>	<b>Price in All India Grid (₹/kWh)</b>
1	Minimum	0.00
2	Maximum	8.00
3	Average	3.53

Source: NLDC

**Figure-6: Price of Short-term Transactions of Electricity, March 2021**



**Figure-7: Price of Short-term Transactions of Electricity, March 2021 (Day-wise)**



*Note: In PXIL, no electricity was transacted in DAM on 22<sup>nd</sup>, 26<sup>th</sup>, 30<sup>th</sup> – 31<sup>st</sup> March 2021 and in RTM during March 2021*

<b>Table-12: VOLUME OF ELECTRICITY SOLD THROUGH BILATERAL, MARCH 2021</b>		
<b>Name of the Entity</b>	<b>Volume of Sale (MUs)</b>	<b>% of Volume</b>
DELHI	577.05	10.35
GUJARAT	559.73	10.04
HARYANA	492.86	8.84
RPREL	477.40	8.56
SEMBCORP	371.45	6.66
PUNJAB	319.98	5.74
REGL	312.64	5.61
RKM POWER	302.51	5.43
DB POWER	263.82	4.73
JITPL	247.20	4.43
DVC	241.46	4.33
ESSAR POWER	143.75	2.58
JINDAL STAGE-II	139.58	2.50
ADHUNIK POWER LTD	135.05	2.42
JAYPEE NIGRIE	134.23	2.41
JINDAL POWER	129.36	2.32
MP	123.85	2.22
SKS POWER	68.24	1.22
IL&FS	67.79	1.22
BALCO	50.06	0.90
KARNATAKA	47.48	0.85
ONGC PALATANA	42.38	0.76
J & K	38.40	0.69
SHREE CEMENT	32.87	0.59
NEEPCO STATIONS	29.99	0.54
MEENAKSHI	22.07	0.40
THERMAL POWERTECH	20.63	0.37
ODISHA	18.95	0.34
DAGACHU	16.52	0.30
TELANGANA	15.70	0.28
MAHARASHTRA	14.98	0.27
JORETHANG	13.91	0.25
ASEJTL_SLR	12.06	0.22
RAJASTHAN	11.26	0.20
TASHIDENG HEP	10.88	0.20
SIKKIM	9.49	0.17
ANDHRA PRADESH	7.83	0.14
HIMACHAL PRADESH	7.74	0.14
TRN ENERGY	7.31	0.13
WEST BENGAL	6.96	0.12
UTTAR PRADESH	5.38	0.10
MEGHALAYA	5.18	0.09
MB POWER	5.04	0.09
CHHATTISGARH	4.68	0.08
LANKO_AMK	2.18	0.04
TAMIL NADU	2.18	0.04
UTTARAKHAND	1.63	0.03
JHABUA POWER_MP	0.84	0.02
DIKCHU HEP	0.75	0.01
NTPC STATIONS-NER	0.74	0.01
ACBIL	0.22	0.004
<b>Total</b>	<b>5574.22</b>	<b>100.00</b>
<b>Volume Sold by top 5 Regional Entities</b>	<b>2478.49</b>	<b>44.46</b>

**Table-13: VOLUME OF ELECTRICITY PURCHASED THROUGH BILATERAL, MARCH 2021**

Name of the Entity	Volume of Purchase (MUs)	% of Volume
TAMIL NADU	1849.94	33.19
GUJARAT	584.62	10.49
TELANGANA	469.70	8.43
HIMACHAL PRADESH	367.93	6.60
WEST BENGAL	247.72	4.44
MAHARASHTRA	234.26	4.20
NEPAL(NVVN)	221.53	3.97
RAJASTHAN	161.56	2.90
MP	158.10	2.84
HARYANA	148.57	2.67
ODISHA	145.54	2.61
JHARKHAND	135.05	2.42
CHHATTISGARH	126.45	2.27
UTTAR PRADESH	113.25	2.03
BIHAR	90.06	1.62
KERALA	68.20	1.22
UTTARAKHAND	62.25	1.12
MEGHALAYA	62.13	1.11
ASSAM	55.69	1.00
DELHI	50.58	0.91
GOA	50.37	0.90
NEP	39.06	0.70
MANIPUR	25.64	0.46
PUNJAB	22.34	0.40
BANGLADESH	22.07	0.40
ANDHRA PRADESH	12.86	0.23
ARUNACHAL PRADESH	10.91	0.20
KARNATAKA	10.69	0.19
NAGALAND	7.39	0.13
AMPS Hazira	6.70	0.12
SIKKIM	6.20	0.11
DVC	3.28	0.06
DADRA & NAGAR HAVELI	2.48	0.04
DAMAN AND DIU	1.17	0.02
<b>TOTAL</b>	<b>5574.29</b>	<b>100.00</b>
<b>Volume Purchased by top 5 Regional Entities</b>	<b>3519.92</b>	<b>63.15</b>

**Table-14: VOLUME OF ELECTRICITY SOLD IN DAY AHEAD MARKET THROUGH POWER EXCHANGES, MARCH 2021**

<b>Name of the Entity</b>	<b>Volume of Sale (MUs)</b>	<b>% of Volume</b>
UTTAR PRADESH	1136.47	17.32
MP	664.43	10.13
RAJASTHAN	487.62	7.43
SEMBCORP	465.13	7.09
BIHAR	263.86	4.02
WEST BENGAL	231.63	3.53
ODISHA	208.44	3.18
DB POWER	194.39	2.96
DELHI	175.84	2.68
JAYPEE NIGRIE	174.72	2.66
KARNATAKA	165.97	2.53
JITPL	165.21	2.52
JINDAL POWER	151.29	2.31
TEESTA STG3	133.65	2.04
EMCO	118.69	1.81
MB POWER	116.04	1.77
GUJARAT	107.39	1.64
RKM POWER	104.90	1.60
JINDAL STAGE-II	99.03	1.51
ASSAM	94.57	1.44
ESSAR POWER	93.67	1.43
DVC	91.73	1.40
MAHARASHTRA	65.30	1.00
ADHUNIK POWER LTD	64.14	0.98
HARYANA	63.20	0.96
SPECTRUM	62.21	0.95
RPREL	60.09	0.92
GMR KAMALANGA	59.10	0.90
REGL	55.22	0.84
NTPC STATIONS-NER	54.26	0.83
IL&FS	47.93	0.73
MARUTI COAL	45.55	0.69
TELANGANA	45.07	0.69
CHHATTISGARH	41.51	0.63
KERALA	36.57	0.56
JHABUA POWER_MP	35.34	0.54
ACBIL	34.74	0.53
HIMACHAL PRADESH	34.44	0.53
PUNJAB	32.42	0.49
ANDHRA PRADESH	27.87	0.42
TRIPURA	21.78	0.33
SKS POWER	20.33	0.31
COASTGEN	18.62	0.28
TAMIL NADU	17.57	0.27
JHARKHAND	13.58	0.21
GOA	13.55	0.21
NTPL	13.04	0.20
KARCHAM WANGTOO	12.82	0.20
NLC	10.92	0.17

SINGOLI BHATWARI HEP	10.50	0.16
AD HYDRO	10.46	0.16
CHANDIGARH	9.90	0.15
DIKCHU HEP	9.86	0.15
BALCO	8.38	0.13
NTPC STATIONS-SR	8.02	0.12
SAINJ HEP	7.75	0.12
RGPPL	7.65	0.12
TRN ENERGY	6.55	0.10
MIZORAM	5.73	0.09
ARUNACHAL PRADESH	5.57	0.08
SHREE CEMENT	4.59	0.07
SIKKIM	3.89	0.06
CHUZACHEN HEP	1.50	0.02
DHARIWAL POWER	1.46	0.02
JORETHANG	1.14	0.02
DADRA & NAGAR HAVELI	1.12	0.02
NEEPCO STATIONS	1.10	0.02
TASHIDENG HEP	0.94	0.01
NAGALAND	0.79	0.01
LANCO BUDHIL	0.54	0.01
NTPC STATIONS-ER	0.36	0.01
RANGANADI HEP	0.14	0.002
PARE HEP	0.06	0.001
DOYANG HEP	0.03	0.0005
NTPC STATIONS-NR	0.02	0.0002
<b>Total</b>	<b>6559.89</b>	<b>100.00</b>
<b>Volume sold by top 5 Regional Entities</b>	<b>3017.51</b>	<b>46.00</b>



<b>Table-15: VOLUME OF ELECTRICITY PURCHASED IN DAY AHEAD MARKET THROUGH POWER EXCHANGES, MARCH 2021</b>		
<b>Name of the Entity</b>	<b>Volume of Purchase (MUs)</b>	<b>% of Volume</b>
TELANGANA	1531.77	23.35
GUJARAT	1528.34	23.30
ANDHRA PRADESH	967.69	14.75
MAHARASHTRA	445.75	6.80
TAMIL NADU	434.36	6.62
UTTARAKHAND	210.67	3.21
UTTAR PRADESH	196.83	3.00
J & K	191.78	2.92
HARYANA	190.51	2.90
RAJASTHAN	186.35	2.84
HIMACHAL PRADESH	83.41	1.27
MP	78.97	1.20
DADRA & NAGAR HAVELI	66.74	1.02
BIHAR	64.96	0.99
ASSAM	55.09	0.84
DELHI	48.81	0.74
JHARKHAND	44.80	0.68
AMPS Hazira	41.67	0.64
ODISHA	36.11	0.55
WEST BENGAL	32.33	0.49
PUNJAB	27.34	0.42
KARNATAKA	25.87	0.39
CHHATTISGARH	24.24	0.37
KERALA	15.00	0.23
GOA	13.68	0.21
DAMAN AND DIU	9.22	0.14
MEGHALAYA	5.22	0.08
ARUNACHAL PRADESH	1.28	0.02
CHANDIGARH	0.83	0.01
TRIPURA	0.28	0.004
<b>TOTAL</b>	<b>6559.89</b>	<b>100.00</b>
<b>Volume purchased by top 5 Regional Entities</b>	<b>4907.90</b>	<b>74.82</b>

<b>Table-16: VOLUME OF ELECTRICITY SOLD IN REAL TIME MARKET THROUGH POWER EXCHANGES, MARCH 2021</b>		
<b>Name of the Entity</b>	<b>Volume of Sale (MUs)</b>	<b>% of Volume</b>
MP	328.22	23.21
WEST BENGAL	187.69	13.27
RAJASTHAN	163.88	11.59
DVC	115.79	8.19
UTTAR PRADESH	68.79	4.86
ODISHA	63.30	4.48
DELHI	43.65	3.09
NLC	31.02	2.19
NEEPCO STATIONS	26.94	1.91
MB POWER	25.53	1.81
CHHATTISGARH	25.05	1.77
KARNATAKA	24.18	1.71
NTPC STATIONS-WR	23.83	1.69
ASSAM	20.64	1.46
GUJARAT	19.05	1.35
JINDAL STAGE-II	15.54	1.10
JINDAL POWER	14.79	1.05
BIHAR	14.16	1.00
NTPC STATIONS-ER	13.42	0.95
JHABUA POWER_MP	13.24	0.94
RKM POWER	11.45	0.81
KERALA	11.45	0.81
HIMACHAL PRADESH	10.91	0.77
TRIPURA	10.51	0.74
MANIPUR	10.23	0.72
BALCO	9.95	0.70
NTPL	9.74	0.69
NTPC STATIONS-NER	9.46	0.67
MAHARASHTRA	8.95	0.63
NTPC STATIONS-SR	8.23	0.58
IL&FS	6.90	0.49
EMCO	6.78	0.48
PUNJAB	6.17	0.44
RPREL	4.88	0.35
HARYANA	4.02	0.28
J & K	3.93	0.28
SASAN UMPP	3.67	0.26
DIKCHU HEP	3.22	0.23
TELANGANA	3.20	0.23
SEMBCORP	3.05	0.22
NTPC STATIONS-NR	2.79	0.20
SIKKIM	2.44	0.17
GMR KAMALANGA	2.11	0.15
DB POWER	2.03	0.14
TAMIL NADU	1.86	0.13
ONGC PALATANA	1.59	0.11
SKS POWER	1.53	0.11
MARUTI COAL	1.29	0.09
RGPPL_IR	1.16	0.08

JHARKHAND	0.88	0.06
SHREE CEMENT	0.88	0.06
RGPPL	0.87	0.06
ANDHRA PRADESH	0.84	0.06
TEESTA STG3	0.79	0.06
BRBCL,NABINAGAR	0.74	0.05
ACBIL	0.72	0.05
ADHUNIK POWER LTD	0.59	0.04
SPECTRUM	0.59	0.04
TRN ENERGY	0.46	0.03
RGPPL_Others	0.46	0.03
MAITHON POWER LTD	0.45	0.03
SINGOLI BHATWARI HEP	0.42	0.03
SAINJ HEP	0.39	0.03
REGL	0.36	0.03
MEGHALAYA	0.32	0.02
CGPL	0.29	0.02
RANGANADI HEP	0.28	0.02
MEENAKSHI	0.28	0.02
ESSAR POWER	0.27	0.02
CHUZACHEN HEP	0.20	0.01
JORETHANG	0.13	0.01
KARCHAM WANGTOO	0.11	0.01
NSPCL	0.10	0.01
ARUNACHAL PRADESH	0.10	0.01
DOYANG HEP	0.08	0.01
PARE HEP	0.08	0.01
TASHIDENG HEP	0.04	0.003
DHARIWAL POWER	0.02	0.001
CHANDIGARH	0.01	0.001
DADRA & NAGAR HAVELI	0.01	0.001
NAGALAND	0.005	0.0004
<b>Total</b>	<b>1413.96</b>	<b>100.00</b>
<b>Volume sold by top 5 Regional Entities</b>	<b>864.36</b>	<b>61.13</b>

<b>Table-17: VOLUME OF ELECTRICITY PURCHASED IN REAL TIME MARKET THROUGH POWER EXCHANGES, MARCH 2021</b>		
<b>Name of the Entity</b>	<b>Volume of Purchase (MUs)</b>	<b>% of Volume</b>
TELANGANA	310.27	21.94
J & K	223.08	15.78
ANDHRA PRADESH	158.05	11.18
RAJASTHAN	100.94	7.14
ODISHA	78.10	5.52
GUJARAT	75.95	5.37
MAHARASHTRA	69.44	4.91
BIHAR	55.82	3.95
TAMIL NADU	51.26	3.63
UTTAR PRADESH	47.74	3.38
WEST BENGAL	34.54	2.44
HARYANA	34.04	2.41
DELHI	26.80	1.90
PUNJAB	26.30	1.86
ASSAM	23.18	1.64
CHHATTISGARH	22.27	1.57
HIMACHAL PRADESH	21.92	1.55
KERALA	8.50	0.60
MEGHALAYA	7.56	0.53
UTTARAKHAND	7.20	0.51
JHARKHAND	6.73	0.48
KARNATAKA	5.37	0.38
GOA	4.24	0.30
MP	3.55	0.25
DADRA & NAGAR HAVELI	2.30	0.16
DVC	1.79	0.13
MANIPUR	1.58	0.11
TRIPURA	1.41	0.10
SIKKIM	1.31	0.09
MARUTI COAL	1.29	0.09
DAMAN AND DIU	0.96	0.07
AMPS Hazira	0.17	0.01
JAYPEE NIGRIE	0.15	0.01
ARUNACHAL PRADESH	0.10	0.01
ACBIL	0.04	0.003
NEEPCO STATIONS	0.02	0.001
REGL	0.005	0.0003
<b>TOTAL</b>	<b>1413.96</b>	<b>100.00</b>
<b>Volume purchased by top 5 Regional Entities</b>	<b>870.44</b>	<b>61.56</b>

<b>Table-18: VOLUME OF ELECTRICITY UNDER DRAWAL (EXPORTED) THROUGH DSM, MARCH 2021</b>		
<b>Name of the Entity</b>	<b>Volume of Under drawal (MUs)</b>	<b>% of Volume</b>
NTPC STATIONS-WR	107.13	5.82
UTTAR PRADESH	103.20	5.61
MP	96.05	5.22
KAPP 3&4	83.34	4.53
RAJASTHAN	75.15	4.08
MAHARASHTRA	72.66	3.95
TAMIL NADU	66.77	3.63
GUJARAT	57.99	3.15
KARNATAKA	54.99	2.99
SASAN UMPP	54.72	2.97
PUNJAB	54.50	2.96
NHPC STATIONS	53.90	2.93
J & K	39.25	2.13
NTPC STATIONS-SR	38.88	2.11
TELANGANA	37.38	2.03
WEST BENGAL	37.09	2.02
HARYANA	36.05	1.96
NTPC STATIONS-NR	35.81	1.95
DELHI	34.51	1.88
ANDHRA PRADESH	34.20	1.86
ESSAR POWER	30.87	1.68
NLC	28.32	1.54
DVC	27.31	1.48
ODISHA	25.22	1.37
KERALA	24.49	1.33
NTPC STATIONS-ER	23.25	1.26
HIMACHAL PRADESH	22.35	1.21
CHUKHA HEP	21.50	1.17
BIHAR	17.68	0.96
CHHATTISGARH	16.80	0.91
GOA	16.07	0.87
GIWEL_BHUI	15.07	0.82
TRIPURA	10.90	0.59
JHARKHAND	10.85	0.59
UTTARAKHAND	10.71	0.58
BBMB	10.66	0.58
ASSAM	9.96	0.54
OSTRO	8.76	0.48
RENEW_BHACHAU	8.58	0.47
RENEW_BHUI	8.48	0.46
JINDAL STAGE-II	8.19	0.44
TATA_PVGD	7.80	0.42
ALFANAR_BHUI	7.80	0.42
GMR KAMALANGA	7.56	0.41
JINDAL POWER	6.79	0.37
NEEPCO STATIONS	6.73	0.37
NJPC	6.34	0.34
FORTUM2_PVGD	6.23	0.34
PONDICHERRY	5.71	0.31
AGEMPL BHUI	5.43	0.29
MANGDECHU HEP	5.36	0.29
ADHUNIK POWER LTD	5.25	0.29
ORANGE_TCN	5.15	0.28
NTPC STATIONS-NER	5.00	0.27
CLEAN_SLR	4.99	0.27
TEESTA HEP	4.99	0.27
MTPS II	4.97	0.27
GIWEL_TCN	4.96	0.27
JHABUA POWER_MP	4.77	0.26
ARUNACHAL PRADESH	4.65	0.25

MEGHALAYA	4.57	0.25
EMCO	4.44	0.24
MANIPUR	4.33	0.24
JAYPEE NIGRIE	4.29	0.23
BETAM_TCN	4.27	0.23
CGPL	4.09	0.22
ACME_SLR	4.01	0.22
RAMPUR HEP	3.65	0.20
MAITHON POWER LTD	3.53	0.19
ACME_RUMS	3.48	0.19
LANKO_AMK	3.46	0.19
INOX_BHUJ	3.42	0.19
ACBIL	3.40	0.18
KARCHAM WANGTOO	3.34	0.18
SINGOLI BHATWARI HEP	3.20	0.17
DADRA & NAGAR HAVELI	3.20	0.17
AVAADA2_PVGD	3.17	0.17
NAGALAND	3.14	0.17
AVAADA1_PVGD	3.08	0.17
AZURE34_SLR	2.98	0.16
BRBCL,NABINAGAR	2.97	0.16
RENEW_SLR_BKN	2.96	0.16
DHARIWAL POWER	2.90	0.16
AYANA_NPKUNTA	2.80	0.15
MYTRAH_TCN	2.80	0.15
AZURE_PVGD	2.67	0.14
RKM POWER	2.61	0.14
DB POWER	2.57	0.14
SEMBCORP	2.47	0.13
VANDANA VIDYUT	2.46	0.13
AZURE_SLR	2.43	0.13
SIKKIM	2.37	0.13
TRN ENERGY	2.36	0.13
MIZORAM	2.34	0.13
TEHRI	2.25	0.12
SBG_NPK	2.23	0.12
SPRNG_NPKUNTA	2.23	0.12
SB_SLR	2.20	0.12
NEPAL(NVVN)	2.17	0.12
CHANDIGARH	2.16	0.12
KOTESHWAR	2.13	0.12
NTPC_ANTP	2.07	0.11
NEP	2.05	0.11
KSK MAHANADI	2.00	0.11
SBG_PVGD	1.96	0.11
RAIL	1.94	0.11
RGPPL	1.93	0.10
ARINSUM_RUMS	1.93	0.10
NPGC	1.91	0.10
IGSTPS	1.91	0.10
REGL	1.90	0.10
NSPCL	1.89	0.10
BALCO	1.84	0.10
JITPL	1.81	0.10
PARAM_PVGD	1.71	0.09
NTPL	1.65	0.09
NETCL VALLUR	1.57	0.09
TATA_ANTP	1.55	0.08
RAP B	1.50	0.08
MAHINDRA_RUMS	1.48	0.08
TEESTA STG3	1.34	0.07
BARC	1.33	0.07

TATA_SLR	1.31	0.07
ADY6_PVGD	1.26	0.07
IL&FS	1.26	0.07
MB POWER	1.25	0.07
RANGANADI HEP	1.24	0.07
DAMAN AND DIU	1.22	0.07
ARERJL_SLR	1.20	0.07
DIKCHU HEP	1.19	0.06
ADY2_PVGD	1.18	0.06
COASTGEN	1.16	0.06
ADY3_PVGD	1.15	0.06
NAPP	1.12	0.06
FORTUM1_PVGD	1.04	0.06
ARS_PVGD	0.99	0.05
AKS_PVGD	0.99	0.05
ADY13_PVGD	0.99	0.05
ONGC PALATANA	0.95	0.05
FRV_NPK	0.91	0.05
ADY10_PVGD	0.89	0.05
ADY1_PVGD	0.87	0.05
RANGIT HEP	0.84	0.05
SKS POWER	0.82	0.04
BANGLADESH	0.80	0.04
RENEW_PVGD	0.80	0.04
YARROW_PVGD	0.76	0.04
THERMAL POWERTECH	0.76	0.04
TASHIDENG HEP	0.66	0.04
CHUZACHEN HEP	0.62	0.03
RENEW_SLR	0.58	0.03
DOYANG HEP	0.56	0.03
KREDL_PVGD	0.52	0.03
ASEJTL_SLR	0.52	0.03
AD HYDRO	0.51	0.03
FRV_ANTP	0.51	0.03
AZURE43_SLR	0.49	0.03
SHREE CEMENT	0.47	0.03
PARE HEP	0.46	0.02
SAINJ HEP	0.44	0.02
LOKTAK	0.40	0.02
JORETHANG	0.38	0.02
NFF	0.38	0.02
AKSP_ANTP	0.38	0.02
AZURE_ANTP	0.36	0.02
ABSP_ANTP	0.34	0.02
HVDC RAIGARH	0.30	0.02
TALA HEP	0.27	0.01
AHSP_ANTP	0.25	0.01
LANCO BUDHIL	0.25	0.01
VINDHYACHAL HVDC	0.20	0.01
RAP C	0.16	0.01
MEENAKSHI	0.08	0.004
DAGACHU	0.06	0.003
KURICHU HEP	0.05	0.003
HVDC CHAMPA	0.05	0.003
HVDC ALPD	0.05	0.003
HVDC PUS	0.04	0.002
BHADRAVATHI HVDC	0.03	0.001
DCPP	0.02	0.001
SIMHAPURI	0.003	0.0002
<b>Total</b>	<b>1839.77</b>	<b>100.00</b>
<b>Volume Exported by top 5 Regional Entities</b>	<b>464.87</b>	<b>25.27</b>

<b>Table-19: VOLUME OF ELECTRICITY OVER DRAWAL (IMPORTED) THROUGH DSM, MARCH 2021</b>		
<b>Name of the Entity</b>	<b>Volume of Over drawal (MUs)</b>	<b>% of Volume</b>
RAJASTHAN	100.02	5.29
KARNATAKA	84.14	4.45
WEST BENGAL	83.21	4.40
GUJARAT	72.52	3.84
NTPC STATIONS-NR	71.38	3.77
NTPC STATIONS-WR	64.62	3.42
TAMIL NADU	63.66	3.37
MAHARASHTRA	62.27	3.29
NTPC STATIONS-ER	56.07	2.97
TELANGANA	55.42	2.93
TALA HEP	52.66	2.78
UTTAR PRADESH	51.09	2.70
ANDHRA PRADESH	50.79	2.69
HARYANA	47.15	2.49
MP	40.00	2.12
JHARKHAND	39.49	2.09
CHHATTISGARH	37.63	1.99
NTPC STATIONS-SR	36.09	1.91
UTTARAKHAND	35.15	1.86
KURICHU HEP	32.74	1.73
KERALA	28.97	1.53
SIKKIM	28.93	1.53
BIHAR	27.25	1.44
PUNJAB	26.62	1.41
NEPAL(NVVN)	23.45	1.24
ODISHA	23.06	1.22
CGPL	21.21	1.12
HIMACHAL PRADESH	19.41	1.03
J & K	19.22	1.02
ESSAR POWER	19.14	1.01
NLC	18.33	0.97
RGPPL	17.57	0.93
BALCO	16.71	0.88
JHABUA POWER_MP	16.55	0.88
NETCL VALLUR	16.38	0.87
ASSAM	12.60	0.67
GIWEL_BHUJ	10.77	0.57
RPREL	10.14	0.54
NHPC STATIONS	9.97	0.53
MYTRAH_TCN	9.54	0.50
IL&FS	9.49	0.50
REGL	9.25	0.49
GIWEL_TCN	9.08	0.48
DVC	8.80	0.47
DADRA & NAGAR HAVELI	8.78	0.46
TEESTA STG3	8.68	0.46
NEP	8.65	0.46
NTPC STATIONS-NER	8.48	0.45
IGSTPS	8.46	0.45
RAIL	8.45	0.45
AGEMPL BHUJ	8.44	0.45
THERMAL POWERTECH	8.04	0.43
DAMAN AND DIU	7.97	0.42
KAPP 3&4	7.75	0.41
DELHI	7.64	0.40
NPGC	7.55	0.40
MB POWER	7.31	0.39
EMCO	7.29	0.39
ORANGE_TCN	6.30	0.33



OSTRO	5.85	0.31
BBMB	5.38	0.28
TRIPURA	5.32	0.28
CHANDIGARH	5.21	0.28
RKM POWER	5.11	0.27
RENEW_BHACHAU	5.11	0.27
CHUKHA HEP	5.10	0.27
COASTGEN	4.89	0.26
BETAM_TCN	4.82	0.25
MANGDECHU HEP	4.76	0.25
MEGHALAYA	4.75	0.25
RGPPL_Others	4.65	0.25
ARUNACHAL PRADESH	4.53	0.24
MAHINDRA_RUMS	4.29	0.23
GOA	4.09	0.22
INOX_BHUI	4.09	0.22
DAGACHU	4.00	0.21
BANGLADESH	3.88	0.21
JITPL	3.88	0.20
ALFANAR_BHUI	3.84	0.20
CLEAN_SLR	3.78	0.20
JAYPEE NIGRIE	3.69	0.19
ARINSUM_RUMS	3.65	0.19
ADHUNIK POWER LTD	3.62	0.19
MAITHON POWER LTD	3.59	0.19
JORETHANG	3.35	0.18
MEENAKSHI	3.22	0.17
NAPP	3.13	0.17
SINGOLI BHATWARI HEP	3.05	0.16
PONDICHERRY	3.04	0.16
ARERJL_SLR	3.01	0.16
BRBCL,NABINAGAR	3.01	0.16
ACBIL	2.92	0.15
MIZORAM	2.91	0.15
DB POWER	2.81	0.15
NTPL	2.68	0.14
JINDAL STAGE-II	2.63	0.14
MTPS II	2.55	0.13
NJPC	2.54	0.13
SB_SLR	2.51	0.13
KARCHAM WANGTOO	2.34	0.12
NTPC_ANTP	2.31	0.12
RENEW_SLR_BKN	2.30	0.12
TASHIDENG HEP	2.17	0.11
NEEPCO STATIONS	2.04	0.11
SBG_NPK	2.01	0.11
TEHRI	1.96	0.10
TATA_PVGD	1.82	0.10
MANIPUR	1.78	0.09
TATA_SLR	1.73	0.09
RANGANADI HEP	1.72	0.09
NSPCL	1.71	0.09
GMR KAMALANGA	1.62	0.09
RAP C	1.57	0.08
SHREE CEMENT	1.54	0.08
TRN ENERGY	1.46	0.08
DHARIWAL POWER	1.41	0.07
SKS POWER	1.39	0.07
JINDAL POWER	1.38	0.07
SBG_PVGD	1.34	0.07
AZURE_SLR	1.31	0.07
DIKCHU HEP	1.25	0.07

ONGC PALATANA	1.18	0.06
KSK MAHANADI	1.17	0.06
PARAM_PVGD	1.16	0.06
DGEN MEGA POWER	1.13	0.06
ACME_RUMS	1.12	0.06
ACME_SLR	1.11	0.06
KOTESHWAR	1.05	0.06
SEMBCORP	1.05	0.06
RAP B	1.04	0.05
NAGALAND	1.00	0.05
HVDC CHAMPA	0.98	0.05
LANKO_AMK	0.96	0.05
RANGIT HEP	0.84	0.04
AZURE34_SLR	0.83	0.04
ASEJTL_SLR	0.74	0.04
FORTUM1_PVGD	0.71	0.04
AHSP_ANTP	0.70	0.04
KREDL_PVGD	0.64	0.03
SPRNG_NPKUNTA	0.58	0.03
LANKO KONDAPALLI	0.54	0.03
AYANA_NPKUNTA	0.54	0.03
RENEW_SLR	0.52	0.03
SASAN UMPP	0.50	0.03
FRV_NPK	0.49	0.03
SIMHAPURI	0.49	0.03
TATA_ANTP	0.46	0.02
AZURE43_SLR	0.45	0.02
RAMPUR HEP	0.43	0.02
ABSP_ANTP	0.42	0.02
AZURE_ANTP	0.42	0.02
CHUZACHEN HEP	0.42	0.02
FORTUM2_PVGD	0.41	0.02
AKSP_ANTP	0.41	0.02
TEESTA HEP	0.40	0.02
DOYANG HEP	0.37	0.02
AVAADA2_PVGD	0.34	0.02
FRV_ANTP	0.33	0.02
AZURE_PVGD	0.29	0.02
RENEW_PVGD	0.29	0.02
AVAADA1_PVGD	0.28	0.01
LOKTAK	0.26	0.01
SAINJ HEP	0.24	0.01
AD HYDRO	0.23	0.01
YARROW_PVGD	0.22	0.01
PARE HEP	0.20	0.01
NFF	0.17	0.01
AKS_PVGD	0.16	0.01
ARS_PVGD	0.16	0.01
ADY1_PVGD	0.16	0.01
ADY3_PVGD	0.13	0.01
ADY6_PVGD	0.13	0.01
ADY13_PVGD	0.13	0.01
BHADRAVATHI HVDC	0.13	0.01
ADY10_PVGD	0.10	0.01
ADY2_PVGD	0.06	0.003
HVDC ALPD	0.03	0.002
HVDC PUS	0.02	0.001
BARC	0.01	0.0003
DCPP	0.004	0.0002
HVDC RAIGARH	0.001	0.0001
<b>TOTAL</b>	<b>1891.01</b>	<b>100.00</b>
<b>Volume Imported by top 5 Regional Entities</b>	<b>411.27</b>	<b>21.75</b>

<b>Table-20: TOTAL VOLUME OF NET SHORT-TERM TRANSACTIONS OF ELECTRICITY (REGIONAL ENTITY-WISE), MARCH 2021</b>		
<b>S. No.</b>	<b>Name of the Entity</b>	<b>Total volume of net short-term transactions of electricity*</b>
1	TAMIL NADU	2310.84
2	TELANGANA	2265.81
3	GUJARAT	1517.28
4	ANDHRA PRADESH	1118.66
5	MAHARASHTRA	649.82
6	HIMACHAL PRADESH	417.23
7	J & K	352.50
8	UTTARAKHAND	302.94
9	NEPAL(NVVN)	242.81
10	JHARKHAND	200.76
11	CHHATTISGARH	122.55
12	DADRA & NAGAR HAVELI	75.98
13	MEGHALAYA	69.58
14	TALA HEP	52.39
15	AMPS Hazira	48.54
16	KERALA	48.16
17	NEP	45.66
18	GOA	42.76
19	NTPC STATIONS-NR	32.77
20	KURICHU HEP	32.69
21	BANGLADESH	25.15
22	ASSAM	21.38
23	NTPC STATIONS-ER	19.04
24	SIKKIM	18.25
25	DAMAN AND DIU	18.10
26	CGPL	16.83
27	NETCL VALLUR	14.80
28	MANIPUR	14.45
29	RGPPL	7.12
30	MYTRAH_TCN	6.74
31	IGSTPS	6.55
32	RAIL	6.52
33	ARUNACHAL PRADESH	6.49
34	NPGC	5.64
35	NAGALAND	4.45
36	RGPPL_Others	4.19
37	GIWEL_TCN	4.13
38	AGEMPL BHUJ	3.02
39	MAHINDRA_RUMS	2.82
40	NAPP	2.02
41	ARERJL_SLR	1.82
42	ARINSUM_RUMS	1.72
43	RAP C	1.41
44	ORANGE_TCN	1.15
45	DGEN MEGA POWER	1.13
46	HVDC CHAMPA	0.93
47	INOX_BHUJ	0.66
48	BETAM_TCN	0.55
49	LANKO KONDAPALLI	0.54
50	SIMHAPURI	0.48
51	AHSP_ANTP	0.45
52	TATA_SLR	0.42
53	SB_SLR	0.31
54	NTPC_ANTP	0.24
55	KREDL_PVGD	0.11
56	BHADRAVATHI HVDC	0.10
57	ABSP_ANTP	0.08
58	RANGANADI HEP	0.06
59	AZURE_ANTP	0.06
60	AKSP_ANTP	0.03

61	RANGIT HEP	0.002
62	DCPP	-0.01
63	HVDC ALPD	-0.02
64	HVDC PUS	-0.02
65	AZURE43_SLR	-0.04
66	RENEW_SLR	-0.06
67	LOKTAK	-0.13
68	FRV_ANTP	-0.18
69	VINDHYACHAL HVDC	-0.20
70	NFF	-0.21
71	SBG_NPK	-0.22
72	NSPCL	-0.28
73	TEHRI	-0.29
74	DOYANG HEP	-0.30
75	HVDC RAIGARH	-0.30
76	FORTUM1_PVGD	-0.33
77	MAITHON POWER LTD	-0.40
78	PARE HEP	-0.40
79	FRV_NPK	-0.42
80	RAP B	-0.46
81	RENEW_PVGD	-0.51
82	YARROW_PVGD	-0.55
83	PARAM_PVGD	-0.55
84	MANGDECHU HEP	-0.60
85	SBG_PVGD	-0.62
86	RENEW_SLR_BKN	-0.66
87	BRBCL_NABINAGAR	-0.70
88	ADY1_PVGD	-0.71
89	ADY10_PVGD	-0.79
90	LANCO BUDHIL	-0.79
91	AKS_PVGD	-0.83
92	KSK MAHANADI	-0.83
93	ARS_PVGD	-0.83
94	ADY13_PVGD	-0.85
95	ADY3_PVGD	-1.02
96	KOTESHWAR	-1.08
97	TATA_ANTP	-1.08
98	AZURE_SLR	-1.12
99	ADY2_PVGD	-1.12
100	ADY6_PVGD	-1.13
101	RGPPL_IR	-1.16
102	CLEAN_SLR	-1.21
103	BARC	-1.32
104	SPRNG_NPKUNTA	-1.65
105	CHUZACHEN HEP	-1.90
106	AZURE34_SLR	-2.15
107	AYANA_NPKUNTA	-2.27
108	ACME_RUMS	-2.36
109	AZURE_PVGD	-2.37
110	MTPS II	-2.42
111	VANDANA VIDYUT	-2.46
112	PONDICHERRY	-2.67
113	AVAADA1_PVGD	-2.80
114	AVAADA2_PVGD	-2.83
115	ACME_SLR	-2.90
116	OSTRO	-2.91
117	DHARIWAL POWER	-2.97
118	RAMPUR HEP	-3.22
119	RENEW_BHACHAU	-3.47
120	NJPC	-3.80
121	ALFANAR_BHUJ	-3.96
122	GIWEL_BHUJ	-4.30
123	TEESTA HEP	-4.59
124	LANKO_AMK	-4.68
125	MIZORAM	-5.16
126	BBMB	-5.27

127	FORTUM2_PVGD	-5.82
128	TATA_PVGD	-5.98
129	CHANDIGARH	-6.02
130	SAINJ HEP	-8.34
131	RENEW_BHUJ	-8.48
132	TASHIDENG HEP	-10.36
133	AD HYDRO	-10.74
134	SINGOLI BHATWARI HEP	-11.08
135	ASEJTL_SLR	-11.84
136	JORETHANG	-12.21
137	DAGACHU	-12.58
138	THERMAL POWERTECH	-13.35
139	DIKCHU HEP	-13.77
140	KARCHAM WANGTOO	-13.94
141	COASTGEN	-14.88
142	TRN ENERGY	-15.22
143	CHUKHA HEP	-16.40
144	NTPC STATIONS-SR	-19.03
145	MEENAKSHI	-19.21
146	NTPL	-21.75
147	ODISHA	-33.11
148	ACBIL	-36.13
149	TRIPURA	-36.19
150	SHREE CEMENT	-37.28
151	JHABUA POWER_MP	-37.64
152	ONGC PALATANA	-43.74
153	NHPC STATIONS	-43.93
154	MARUTI COAL	-45.55
155	NLC	-51.93
156	BALCO	-53.51
157	BIHAR	-57.62
158	SASAN UMPP	-57.90
159	NTPC STATIONS-NER	-60.98
160	NEEPCO STATIONS	-62.69
161	SPECTRUM	-62.80
162	WEST BENGAL	-65.58
163	NTPC STATIONS-WR	-66.35
164	GMR KAMALANGA	-67.15
165	KAPP 3&4	-75.59
166	SKS POWER	-89.54
167	IL&FS	-114.39
168	EMCO	-122.62
169	TEESTA STG3	-127.10
170	MB POWER	-140.54
171	KARNATAKA	-166.56
172	HARYANA	-175.86
173	RAJASTHAN	-189.04
174	ADHUNIK POWER LTD	-201.42
175	ESSAR POWER	-249.42
176	JINDAL STAGE-II	-259.70
177	JINDAL POWER	-300.84
178	JAYPEE NIGRIE	-309.41
179	PUNJAB	-310.47
180	REGL	-360.87
181	JITPL	-410.35
182	RKM POWER	-416.36
183	DB POWER	-460.00
184	DVC	-462.42
185	RPREL	-532.24
186	DELHI	-697.22
187	SEMBCORP	-841.04
188	UTTAR PRADESH	-904.92
189	MP	-931.93

\* Total volume of net short-term transactions of electricity includes net of transactions of electricity through bilateral, power exchange and UI

(-) indicates sale and (+) indicates purchase

<b>Table-21: DETAILS OF CONGESTION IN POWER EXCHANGES, MARCH 2021</b>					
	<b>Details of Congestion</b>	<b>Day Ahead Market</b>		<b>Real Time Market</b>	
		<b>IEX</b>	<b>PXIL</b>	<b>IEX</b>	<b>PXIL</b>
A	Unconstrained Cleared Volume (MUs)	6573.28	10.94	1421.26	0.00
B	Actual Cleared Volume and hence scheduled (MUs)	6548.94	10.94	1413.96	0.00
C	Volume of electricity that could not be cleared and hence not scheduled because of congestion (MUs) *	24.34	0.00	7.30	0.00
D	Volume of electricity that could not be cleared and hence not scheduled because of reasons other than congestion (MUs)	0.00	0.00	0.00	0.00
E	Volume of electricity that could not be cleared as % to Unconstrained Cleared Volume	0.37%	0.00%	0.51%	0.00%
F	Percentage of the time congestion occurred during the month (Number of hours congestion occurred/Total number of hours in the month)	9.81%	0.00%	6.82%	0.00%
G	Congestion occurrence (%) time block wise				
	0.00 - 6.00 hours	17.12%	0.00%	15.76%	0.00%
	6.00 - 12.00 hours	65.07%	0.00%	44.33%	0.00%
	12.00 - 18.00 hours	16.44%	0.00%	13.79%	0.00%
	18.00 - 24.00 hours	1.37%	0.00%	26.11%	0.00%
<i>*This power would have been scheduled had there been no congestion.</i>					
<i>Source: IEX, PXIL &amp; NLDC</i>					

<b>Table-22: VOLUME OF SHORT-TERM TRANSACTIONS OF ELECTRICITY IN INDIA (DAY-WISE) (MUs), MARCH 2021</b>								
Date	Bilateral		Day Ahead Market <sup>#</sup>		Real Time Market <sup>#</sup>		Deviation Settlement (Over Drawl + Under Generation)	Total Electricity Generation (MU) as given at CEA Website*
	Through Traders and PXs**	Direct	IEX	PXIL	IEX	PXIL		
1-Mar-21	110.73	31.45	185.89	0.19	43.46	0.00	56.91	3788.15
2-Mar-21	117.69	31.78	191.04	0.23	37.91	0.00	53.26	3831.62
3-Mar-21	133.85	31.93	184.14	0.56	45.27	0.00	54.55	3818.54
4-Mar-21	131.97	30.24	195.14	0.44	41.76	0.00	54.20	3816.09
5-Mar-21	131.87	33.45	209.86	0.23	43.86	0.00	56.33	3877.28
6-Mar-21	132.73	32.40	199.64	0.31	43.08	0.00	55.58	3865.59
7-Mar-21	137.42	30.83	194.22	0.45	35.29	0.00	54.90	3659.57
8-Mar-21	143.02	32.60	181.14	0.32	55.89	0.00	56.03	3811.07
9-Mar-21	136.00	32.62	197.53	0.44	51.97	0.00	57.15	3931.85
10-Mar-21	141.30	29.93	212.30	0.96	48.13	0.00	59.88	3936.45
11-Mar-21	143.97	29.34	208.45	0.44	58.66	0.00	58.89	3929.52
12-Mar-21	134.81	30.13	219.95	1.22	40.53	0.00	61.80	3779.25
13-Mar-21	135.22	30.67	225.10	0.40	38.61	0.00	62.82	3694.15
14-Mar-21	131.78	27.57	204.90	0.36	39.66	0.00	57.05	3671.01
15-Mar-21	144.53	34.95	221.06	0.27	39.22	0.00	56.04	3850.49
16-Mar-21	144.03	35.36	209.82	0.29	48.13	0.00	57.66	3924.25
17-Mar-21	152.55	35.47	200.32	0.26	49.84	0.00	60.97	3964.85
18-Mar-21	150.10	35.53	219.60	0.96	48.88	0.00	58.83	3964.49
19-Mar-21	146.95	33.52	227.22	0.65	49.21	0.00	62.51	4007.20
20-Mar-21	165.81	35.21	214.55	0.41	54.33	0.00	61.96	3915.83
21-Mar-21	147.93	34.60	203.10	0.60	38.64	0.00	62.58	3773.98
22-Mar-21	155.14	36.11	214.99	0.00	43.00	0.00	67.74	3869.70
23-Mar-21	152.68	36.30	220.65	0.32	62.77	0.00	69.27	3790.24
24-Mar-21	152.63	35.20	251.01	0.29	42.56	0.00	64.05	3852.74
25-Mar-21	168.22	33.59	240.03	0.01	50.28	0.00	63.64	3937.75
26-Mar-21	160.76	33.48	227.68	0.00	39.93	0.00	59.77	3922.16
27-Mar-21	166.50	34.99	217.06	0.13	52.99	0.00	59.68	3936.85
28-Mar-21	159.21	33.21	237.58	0.11	44.00	0.00	59.85	3753.27
29-Mar-21	169.38	33.67	194.23	0.11	34.64	0.00	64.42	3456.17
30-Mar-21	180.14	34.39	219.36	0.00	47.34	0.00	70.50	3546.00
31-Mar-21	170.06	34.84	221.38	0.00	44.12	0.00	66.60	3726.59
<b>Total</b>	<b>4548.95</b>	<b>1025.34</b>	<b>6548.94</b>	<b>10.94</b>	<b>1413.96</b>	<b>0.00</b>	<b>1865.40</b>	<b>118602.70</b>

Source: NLDC

\* Gross Electricity Generation excluding electricity generation from renewables and captive power plants.

\*\* The volume of bilateral through PXs represents the volume through term-ahead contracts.

# Scheduled volume of all the bid areas.

Table-23: PRICE OF SHORT-TERM TRANSACTIONS OF ELECTRICITY (DAY-WISE)( ₹/kWh), MARCH 2021									
Market Segment	Day ahead market of IEX			Day ahead market of PXIL			Under Drawl/Over Drawl from the Grid (DSM)		
Date	Minimum ACP	Maximum ACP	Weighted Average Price*	Minimum ACP	Maximum ACP	Weighted Average Price*	All India Grid		
							Minimum Price	Maximum Price	Average Price**
1-Mar-21	2.75	7.88	3.89	2.80	7.80	3.13	0.00	8.00	3.06
2-Mar-21	2.62	8.01	3.72	2.80	4.99	3.35	0.00	6.74	2.76
3-Mar-21	2.57	8.21	3.57	3.30	4.99	4.05	0.00	6.49	2.86
4-Mar-21	2.62	8.51	3.49	2.62	4.50	3.44	0.00	7.48	3.43
5-Mar-21	2.63	8.50	3.69	2.80	5.00	3.57	0.00	7.48	4.08
6-Mar-21	2.72	6.00	3.91	2.80	4.99	3.66	0.00	7.74	3.97
7-Mar-21	2.85	5.75	3.89	3.00	4.49	3.64	0.00	5.93	2.58
8-Mar-21	2.82	7.15	4.19	3.00	5.00	4.09	0.00	8.00	4.59
9-Mar-21	2.95	6.30	4.13	3.00	5.00	4.18	0.00	8.00	4.32
10-Mar-21	3.03	7.82	4.45	3.25	5.79	4.16	0.00	8.00	4.48
11-Mar-21	3.03	6.30	4.18	3.50	5.99	4.48	0.00	7.06	2.96
12-Mar-21	3.21	7.99	4.63	3.29	5.99	4.11	0.00	7.38	3.18
13-Mar-21	3.21	6.81	4.14	3.50	6.19	4.45	0.00	8.00	3.69
14-Mar-21	2.75	3.69	3.17	3.50	6.19	4.40	0.00	7.70	3.23
15-Mar-21	2.84	6.58	3.95	3.39	6.00	3.74	0.00	8.00	3.46
16-Mar-21	3.00	6.30	3.92	3.20	5.69	4.17	0.00	8.00	4.18
17-Mar-21	3.28	8.26	4.59	3.00	5.59	4.04	0.00	8.00	5.59
18-Mar-21	3.38	8.58	5.23	3.13	5.42	4.10	0.00	8.00	4.59
19-Mar-21	3.36	8.98	5.29	3.63	6.19	4.88	0.00	8.00	4.16
20-Mar-21	3.47	9.00	5.39	4.50	5.99	5.24	0.00	8.00	3.60
21-Mar-21	2.87	5.99	3.52	3.59	5.59	4.51	0.00	7.46	3.04
22-Mar-21	2.97	7.00	3.83	-	-	-	0.00	8.00	4.30
23-Mar-21	2.87	7.53	3.81	3.20	4.99	4.05	0.00	6.98	2.40
24-Mar-21	2.98	8.53	3.84	3.20	4.99	3.72	0.00	8.00	3.41
25-Mar-21	3.14	9.00	4.42	5.99	5.99	5.99	0.00	8.00	3.32
26-Mar-21	3.06	9.54	4.64	-	-	-	0.00	8.00	4.37
27-Mar-21	3.06	9.88	5.04	5.79	5.99	5.80	0.00	8.00	3.33
28-Mar-21	2.98	8.00	3.56	5.79	5.79	5.79	0.00	5.84	2.32
29-Mar-21	2.34	9.86	3.29	5.79	5.79	5.79	0.00	7.18	2.93
30-Mar-21	2.67	9.50	4.12	-	-	-	0.00	8.00	2.68
31-Mar-21	2.80	5.79	3.49	-	-	-	0.00	6.64	2.52
	<b>2.34<sup>#</sup></b>	<b>9.88<sup>#</sup></b>	<b>4.11</b>	<b>2.62<sup>#</sup></b>	<b>7.80<sup>#</sup></b>	<b>4.19</b>	<b>0.00<sup>#</sup></b>	<b>8.00<sup>#</sup></b>	<b>3.53</b>

Source: Data on price of PX transactions from IEX and PXIL and data on DSM Price from NLDC.

\* Weighted average price computed based on Area Clearing Volume (ACV) and Area Clearing Price (ACP) for each hour of the day. Here, ACV and ACP represent the scheduled volume and weighted average price of all the bid areas of power exchanges.

\*\* Simple average price of DSM of 96 time blocks of 15 minutes each in a day. DSM price includes Ceiling DSM Rate +40% additional DSM charge.

# Maximum/Minimum in the month



Table-24: PRICE OF REAL TIME MARKET TRANSACTIONS OF ELECTRICITY (DAY-WISE) (₹/kWh), MARCH 2021						
Market Segment	Real Time market of IEX			Real Time market of PXIL		
Date	Minimum ACP	Maximum ACP	Weighted Average Price*	Minimum ACP	Maximum ACP	Weighted Average Price*
1-Mar-21	2.51	6.09	3.57	--	--	--
2-Mar-21	2.30	4.49	3.14	--	--	--
3-Mar-21	2.51	6.00	3.39	--	--	--
4-Mar-21	2.40	5.00	3.36	--	--	--
5-Mar-21	2.36	6.50	3.70	--	--	--
6-Mar-21	2.27	6.00	3.71	--	--	--
7-Mar-21	1.60	3.62	3.03	--	--	--
8-Mar-21	2.50	19.99	4.02	--	--	--
9-Mar-21	2.80	8.00	4.39	--	--	--
10-Mar-21	2.96	8.00	4.71	--	--	--
11-Mar-21	2.46	6.20	4.20	--	--	--
12-Mar-21	2.28	4.49	3.07	--	--	--
13-Mar-21	2.00	5.40	2.79	--	--	--
14-Mar-21	2.36	3.50	3.02	--	--	--
15-Mar-21	2.70	6.00	3.67	--	--	--
16-Mar-21	3.04	8.58	4.78	--	--	--
17-Mar-21	2.90	10.00	5.29	--	--	--
18-Mar-21	3.70	8.25	6.18	--	--	--
19-Mar-21	2.75	8.00	4.52	--	--	--
20-Mar-21	2.65	8.50	3.89	--	--	--
21-Mar-21	1.50	3.93	3.02	--	--	--
22-Mar-21	1.43	8.50	3.49	--	--	--
23-Mar-21	2.75	8.84	3.95	--	--	--
24-Mar-21	2.79	9.85	4.35	--	--	--
25-Mar-21	2.87	9.91	4.52	--	--	--
26-Mar-21	2.83	8.99	4.60	--	--	--
27-Mar-21	2.68	9.57	3.59	--	--	--
28-Mar-21	2.29	5.40	3.11	--	--	--
29-Mar-21	1.44	9.01	2.71	--	--	--
30-Mar-21	1.50	5.40	2.76	--	--	--
31-Mar-21	2.00	4.70	3.01	--	--	--
	<b>1.43<sup>#</sup></b>	<b>19.99<sup>#</sup></b>	<b>3.85</b>	--	--	--

Source: IEX and PXIL

\* Weighted average price computed based on Area Clearing Volume (ACV) and Area Clearing Price (ACP) for each hour of the day. Here, ACV and ACP represent the scheduled volume and weighted average price of all the bid areas of power exchanges.

# Maximum/Minimum in the month

**Table-25: VOLUME OF SHORT-TERM TRANSACTIONS OF ELECTRICITY (REGIONAL ENTITY\*-WISE) (MUs), MARCH 2021**

Name of the Entity	Through Bilateral			Through Power Exchange (DAM + RTM)			Through DSM with Regional Grid			Total Net***
	Sale	Purchase	Net**	Sale	Purchase	Net**	Import (Over Draw)	Export (Under Draw)	Net**	
PUNJAB	319.98	22.34	-297.64	38.59	53.64	15.05	26.62	54.50	-27.87	-310.47
HARYANA	492.86	148.57	-344.29	67.22	224.55	157.33	47.15	36.05	11.09	-175.86
RAJASTHAN	11.26	161.56	150.30	651.50	287.29	-364.21	100.02	75.15	24.87	-189.04
DELHI	577.05	50.58	-526.47	219.49	75.61	-143.88	7.64	34.51	-26.87	-697.22
UTTAR PRADESH	5.38	113.25	107.87	1205.26	244.57	-960.69	51.09	103.20	-52.11	-904.92
UTTARAKHAND	1.63	62.25	60.62	0.00	217.87	217.87	35.15	10.71	24.45	302.94
HIMACHAL P	7.74	367.93	360.19	45.35	105.33	59.98	19.41	22.35	-2.94	417.23
J & K	38.40	0.00	-38.40	3.93	414.86	410.93	19.22	39.25	-20.03	352.50
CHANDIGARH	0.00	0.00	0.00	9.90	0.83	-9.07	5.21	2.16	3.05	-6.02
MP	123.85	158.10	34.25	992.64	82.52	-910.13	40.00	96.05	-56.05	-931.93
MAHARASHTRA	14.98	234.26	219.27	74.26	515.19	440.94	62.27	72.66	-10.39	649.82
GUJARAT	559.73	584.62	24.89	126.44	1604.29	1477.85	72.52	57.99	14.53	1517.28
CHHATTISGARH	4.68	126.45	121.77	66.56	46.51	-20.05	37.63	16.80	20.83	122.55
GOA	0.00	50.37	50.37	13.55	17.92	4.36	4.09	16.07	-11.98	42.76
DAMAN AND DIU	0.00	1.17	1.17	0.00	10.19	10.19	7.97	1.22	6.75	18.10
DADRA & NAGAR H	0.00	2.48	2.48	1.12	69.05	67.92	8.78	3.20	5.58	75.98
ANDHRA P	7.83	12.86	5.03	28.70	1125.74	1097.03	50.79	34.20	16.59	1118.66
KARNATAKA	47.48	10.69	-36.79	190.14	31.23	-158.91	84.14	54.99	29.15	-166.56
KERALA	0.00	68.20	68.20	48.02	23.50	-24.52	28.97	24.49	4.48	48.16
TAMIL NADU	2.18	1849.94	1847.76	19.43	485.62	466.19	63.66	66.77	-3.11	2310.84
PONDICHERRY	0.00	0.00	0.00	0.00	0.00	0.00	3.04	5.71	-2.67	-2.67
TELANGANA	15.70	469.70	454.01	48.27	1842.04	1793.77	55.42	37.38	18.04	2265.81
WEST BENGAL	6.96	247.72	240.76	419.32	66.86	-352.46	83.21	37.09	46.12	-65.58
ODISHA	18.95	145.54	126.59	271.75	114.21	-157.54	23.06	25.22	-2.16	-33.11
BIHAR	0.00	90.06	90.06	278.03	120.78	-157.24	27.25	17.68	9.57	-57.62
JHARKHAND	0.00	135.05	135.05	14.46	51.53	37.07	39.49	10.85	28.64	200.76
SIKKIM	9.49	6.20	-3.28	6.32	1.31	-5.02	28.93	2.37	26.55	18.25
DVC	241.46	3.28	-238.18	207.52	1.79	-205.73	8.80	27.31	-18.51	-462.42
ARUNACHAL P	0.00	10.91	10.91	5.67	1.38	-4.29	4.53	4.65	-0.12	6.49
ASSAM	0.00	55.69	55.69	115.21	78.27	-36.94	12.60	9.96	2.64	21.38
MANIPUR	0.00	25.64	25.64	10.23	1.58	-8.65	1.78	4.33	-2.55	14.45
MEGHALAYA	5.18	62.13	56.94	0.32	12.78	12.46	4.75	4.57	0.18	69.58
MIZORAM	0.00	0.00	0.00	5.73	0.00	-5.73	2.91	2.34	0.57	-5.16
NAGALAND	0.00	7.39	7.39	0.80	0.00	-0.80	1.00	3.14	-2.15	4.45
TRIPURA	0.00	0.00	0.00	32.29	1.68	-30.61	5.32	10.90	-5.58	-36.19
NTPC STNS-NR	0.00	0.00	0.00	2.81	0.00	-2.81	71.38	35.81	35.58	32.77
NHPC STNS	0.00	0.00	0.00	0.00	0.00	0.00	9.97	53.90	-43.93	-43.93
NFF	0.00	0.00	0.00	0.00	0.00	0.00	0.17	0.38	-0.21	-0.21
RAIL	0.00	0.00	0.00	0.00	0.00	0.00	8.45	1.94	6.52	6.52
NEP	0.00	39.06	39.06	0.00	0.00	0.00	8.65	2.05	6.59	45.66
NAPP	0.00	0.00	0.00	0.00	0.00	0.00	3.13	1.12	2.02	2.02
RAP B	0.00	0.00	0.00	0.00	0.00	0.00	1.04	1.50	-0.46	-0.46
NJPC	0.00	0.00	0.00	0.00	0.00	0.00	2.54	6.34	-3.80	-3.80
TEHRI	0.00	0.00	0.00	0.00	0.00	0.00	1.96	2.25	-0.29	-0.29
BBMB	0.00	0.00	0.00	0.00	0.00	0.00	5.38	10.66	-5.27	-5.27
RAP C	0.00	0.00	0.00	0.00	0.00	0.00	1.57	0.16	1.41	1.41
AD HYDRO	0.00	0.00	0.00	10.46	0.00	-10.46	0.23	0.51	-0.28	-10.74
IGSTPS	0.00	0.00	0.00	0.00	0.00	0.00	8.46	1.91	6.55	6.55
KOTESHWAR	0.00	0.00	0.00	0.00	0.00	0.00	1.05	2.13	-1.08	-1.08
KARCHAM WANGT	0.00	0.00	0.00	12.93	0.00	-12.93	2.34	3.34	-1.00	-13.94
SHREE CEMENT	32.87	0.00	-32.87	5.47	0.00	-5.47	1.54	0.47	1.06	-37.28
LANCO BUDHIL	0.00	0.00	0.00	0.54	0.00	-0.54	0.00	0.25	-0.25	-0.79
RAMPUR HEP	0.00	0.00	0.00	0.00	0.00	0.00	0.43	3.65	-3.22	-3.22
SAINJ HEP	0.00	0.00	0.00	8.14	0.00	-8.14	0.24	0.44	-0.20	-8.34
RENEW_SLR	0.00	0.00	0.00	0.00	0.00	0.00	0.52	0.58	-0.06	-0.06
AZURE_SLR	0.00	0.00	0.00	0.00	0.00	0.00	1.31	2.43	-1.12	-1.12
SB_SLR	0.00	0.00	0.00	0.00	0.00	0.00	2.51	2.20	0.31	0.31
ACME_SLR	0.00	0.00	0.00	0.00	0.00	0.00	1.11	4.01	-2.90	-2.90
AZURE34_SLR	0.00	0.00	0.00	0.00	0.00	0.00	0.83	2.98	-2.15	-2.15
TATA_SLR	0.00	0.00	0.00	0.00	0.00	0.00	1.73	1.31	0.42	0.42
RENEW_SLR_BKN	0.00	0.00	0.00	0.00	0.00	0.00	2.30	2.96	-0.66	-0.66

CLEAN_SLR	0.00	0.00	0.00	0.00	0.00	0.00	3.78	4.99	-1.21	-1.21
ARERJL_SLR	0.00	0.00	0.00	0.00	0.00	0.00	3.01	1.20	1.82	1.82
ASEJTL_SLR	12.06	0.00	-12.06	0.00	0.00	0.00	0.74	0.52	0.22	-11.84
SINGOLI BHATWAR	0.00	0.00	0.00	10.92	0.00	-10.92	3.05	3.20	-0.15	-11.08
AZURE43_SLR	0.00	0.00	0.00	0.00	0.00	0.00	0.45	0.49	-0.04	-0.04
NTPC STNS-WR	0.00	0.00	0.00	23.83	0.00	-23.83	64.62	107.13	-42.52	-66.35
BHADRAVATHI HV	0.00	0.00	0.00	0.00	0.00	0.00	0.13	0.03	0.10	0.10
VINDHYACHAL HV	0.00	0.00	0.00	0.00	0.00	0.00	0.00	0.20	-0.20	-0.20
JINDAL POWER	129.36	0.00	-129.36	166.07	0.00	-166.07	1.38	6.79	-5.41	-300.84
LANKO_AMK	2.18	0.00	-2.18	0.00	0.00	0.00	0.96	3.46	-2.49	-4.68
NSPCL	0.00	0.00	0.00	0.10	0.00	-0.10	1.71	1.89	-0.18	-0.28
ACBIL	0.22	0.00	-0.22	35.47	0.04	-35.43	2.92	3.40	-0.48	-36.13
BALCO	50.06	0.00	-50.06	18.32	0.00	-18.32	16.71	1.84	14.87	-53.51
RGPPL	0.00	0.00	0.00	8.52	0.00	-8.52	17.57	1.93	15.64	7.12
CGPL	0.00	0.00	0.00	0.29	0.00	-0.29	21.21	4.09	17.12	16.83
DCPP	0.00	0.00	0.00	0.00	0.00	0.00	0.00	0.02	-0.01	-0.01
EMCO	0.00	0.00	0.00	125.47	0.00	-125.47	7.29	4.44	2.85	-122.62
VANDANA VIDYUT	0.00	0.00	0.00	0.00	0.00	0.00	0.00	2.46	-2.46	-2.46
KSK MAHANADI	0.00	0.00	0.00	0.00	0.00	0.00	1.17	2.00	-0.83	-0.83
ESSAR POWER	143.75	0.00	-143.75	93.94	0.00	-93.94	19.14	30.87	-11.73	-249.42
JINDAL STAGE-II	139.58	0.00	-139.58	114.57	0.00	-114.57	2.63	8.19	-5.55	-259.70
DB POWER	263.82	0.00	-263.82	196.42	0.00	-196.42	2.81	2.57	0.24	-460.00
DHARIWAL POWER	0.00	0.00	0.00	1.48	0.00	-1.48	1.41	2.90	-1.49	-2.97
JAYPEE NIGRIE	134.23	0.00	-134.23	174.72	0.15	-174.57	3.69	4.29	-0.61	-309.41
DGEN MEGA POWER	0.00	0.00	0.00	0.00	0.00	0.00	1.13	0.00	1.13	1.13
MB POWER	5.04	0.00	-5.04	141.57	0.00	-141.57	7.31	1.25	6.06	-140.54
MARUTI COAL	0.00	0.00	0.00	46.84	1.29	-45.55	0.00	0.00	0.00	-45.55
SPECTRUM	0.00	0.00	0.00	62.80	0.00	-62.80	0.00	0.00	0.00	-62.80
JHABUA POWER MI	0.84	0.00	-0.84	48.58	0.00	-48.58	16.55	4.77	11.78	-37.64
SASAN UMP	0.00	0.00	0.00	3.67	0.00	-3.67	0.50	54.72	-54.23	-57.90
TRN ENERGY	7.31	0.00	-7.31	7.01	0.00	-7.01	1.46	2.36	-0.90	-15.22
RKM POWER	302.51	0.00	-302.51	116.35	0.00	-116.35	5.11	2.61	2.50	-416.36
SKS POWER	68.24	0.00	-68.24	21.86	0.00	-21.86	1.39	0.82	0.56	-89.54
BARC	0.00	0.00	0.00	0.00	0.00	0.00	0.01	1.33	-1.32	-1.32
KAPP 3&4	0.00	0.00	0.00	0.00	0.00	0.00	7.75	83.34	-75.59	-75.59
HVDC CHAMPA	0.00	0.00	0.00	0.00	0.00	0.00	0.98	0.05	0.93	0.93
MAHINDRA_RUMS	0.00	0.00	0.00	0.00	0.00	0.00	4.29	1.48	2.82	2.82
ARINSUM_RUMS	0.00	0.00	0.00	0.00	0.00	0.00	3.65	1.93	1.72	1.72
OSTRO	0.00	0.00	0.00	0.00	0.00	0.00	5.85	8.76	-2.91	-2.91
ACME_RUMS	0.00	0.00	0.00	0.00	0.00	0.00	1.12	3.48	-2.36	-2.36
RENEW_BHACHAU	0.00	0.00	0.00	0.00	0.00	0.00	5.11	8.58	-3.47	-3.47
GIWEL_BHUJ	0.00	0.00	0.00	0.00	0.00	0.00	10.77	15.07	-4.30	-4.30
INOX_BHUJ	0.00	0.00	0.00	0.00	0.00	0.00	4.09	3.42	0.661	0.661
AGEMPL BHUJ	0.00	0.00	0.00	0.00	0.00	0.00	8.44	5.43	3.02	3.02
REGL	312.64	0.00	-312.64	55.59	0.00	-55.58	9.25	1.90	7.35	-360.87
RPREL	477.40	0.00	-477.40	64.98	0.00	-64.98	10.14	0.00	10.14	-532.24
AMPS Hazira	0.00	6.70	6.70	0.00	41.84	41.84	0.00	0.00	0.00	48.54
HVDC RAIGARH	0.00	0.00	0.00	0.00	0.00	0.00	0.00	0.30	-0.30	-0.30
RGPPL_IR	0.00	0.00	0.00	1.16	0.00	-1.16	0.00	0.00	0.00	-1.16
RGPPL_Others	0.00	0.00	0.00	0.46	0.00	-0.46	4.65	0.00	4.65	4.19
ALFANAR_BHUJ	0.00	0.00	0.00	0.00	0.00	0.00	3.84	7.80	-3.96	-3.96
RENEW_BHUJ	0.00	0.00	0.00	0.00	0.00	0.00	0.00	8.48	-8.48	-8.48
NTPC STNS-SR	0.00	0.00	0.00	16.25	0.00	-16.25	36.09	38.88	-2.78	-19.03
LANKO KONDAPAL	0.00	0.00	0.00	0.00	0.00	0.00	0.54	0.00	0.54	0.54
SIMHAPURI	0.00	0.00	0.00	0.00	0.00	0.00	0.49	0.00	0.48	0.48
MEENAKSHI	22.07	0.00	-22.07	0.28	0.00	-0.28	3.22	0.08	3.14	-19.21
COASTGEN	0.00	0.00	0.00	18.62	0.00	-18.62	4.89	1.16	3.74	-14.88
THERMAL POWER T	20.63	0.00	-20.63	0.00	0.00	0.00	8.04	0.76	7.28	-13.35
IL&FS	67.79	0.00	-67.79	54.84	0.00	-54.84	9.49	1.26	8.23	-114.39
NLC	0.00	0.00	0.00	41.94	0.00	-41.94	18.33	28.32	-9.99	-51.93
SEMBCORP	371.45	0.00	-371.45	468.17	0.00	-468.17	1.05	2.47	-1.42	-841.04
NETCL VALLUR	0.00	0.00	0.00	0.00	0.00	0.00	16.38	1.57	14.80	14.80
NTPL	0.00	0.00	0.00	22.78	0.00	-22.78	2.68	1.65	1.03	-21.75
AHSP_ANTP	0.00	0.00	0.00	0.00	0.00	0.00	0.70	0.25	0.45	0.45
AKSP_ANTP	0.00	0.00	0.00	0.00	0.00	0.00	0.41	0.38	0.03	0.03
ABSP_ANTP	0.00	0.00	0.00	0.00	0.00	0.00	0.42	0.34	0.08	0.08
AZURE_ANTP	0.00	0.00	0.00	0.00	0.00	0.00	0.42	0.36	0.06	0.06

TATA_ANTP	0.00	0.00	0.00	0.00	0.00	0.00	0.46	1.55	-1.08	-1.08
FRV_ANTP	0.00	0.00	0.00	0.00	0.00	0.00	0.33	0.51	-0.18	-0.18
NTPC_ANTP	0.00	0.00	0.00	0.00	0.00	0.00	2.31	2.07	0.24	0.24
GIWEL_TCN	0.00	0.00	0.00	0.00	0.00	0.00	9.08	4.96	4.13	4.13
MYTRAH_TCN	0.00	0.00	0.00	0.00	0.00	0.00	9.54	2.80	6.74	6.74
FRV_NPK	0.00	0.00	0.00	0.00	0.00	0.00	0.49	0.91	-0.42	-0.42
ORANGE_TCN	0.00	0.00	0.00	0.00	0.00	0.00	6.30	5.15	1.15	1.15
BETAM_TCN	0.00	0.00	0.00	0.00	0.00	0.00	4.82	4.27	0.55	0.55
SBG_PVGD	0.00	0.00	0.00	0.00	0.00	0.00	1.34	1.96	-0.62	-0.62
SBG_NPK	0.00	0.00	0.00	0.00	0.00	0.00	2.01	2.23	-0.22	-0.22
FORTUM1_PVGD	0.00	0.00	0.00	0.00	0.00	0.00	0.71	1.04	-0.33	-0.33
PARAM_PVGD	0.00	0.00	0.00	0.00	0.00	0.00	1.16	1.71	-0.55	-0.55
YARROW_PVGD	0.00	0.00	0.00	0.00	0.00	0.00	0.22	0.76	-0.55	-0.55
TATA_PVGD	0.00	0.00	0.00	0.00	0.00	0.00	1.82	7.80	-5.98	-5.98
RENEW_PVGD	0.00	0.00	0.00	0.00	0.00	0.00	0.29	0.80	-0.51	-0.51
AKS_PVGD	0.00	0.00	0.00	0.00	0.00	0.00	0.16	0.99	-0.83	-0.83
ARS_PVGD	0.00	0.00	0.00	0.00	0.00	0.00	0.16	0.99	-0.83	-0.83
AVAADA1_PVGD	0.00	0.00	0.00	0.00	0.00	0.00	0.28	3.08	-2.80	-2.80
ADY1_PVGD	0.00	0.00	0.00	0.00	0.00	0.00	0.16	0.87	-0.71	-0.71
ADY2_PVGD	0.00	0.00	0.00	0.00	0.00	0.00	0.06	1.18	-1.12	-1.12
ADY13_PVGD	0.00	0.00	0.00	0.00	0.00	0.00	0.13	0.99	-0.85	-0.85
ADY3_PVGD	0.00	0.00	0.00	0.00	0.00	0.00	0.13	1.15	-1.02	-1.02
ADY6_PVGD	0.00	0.00	0.00	0.00	0.00	0.00	0.13	1.26	-1.13	-1.13
ADY10_PVGD	0.00	0.00	0.00	0.00	0.00	0.00	0.10	0.89	-0.79	-0.79
AZURE_PVGD	0.00	0.00	0.00	0.00	0.00	0.00	0.29	2.67	-2.37	-2.37
FORTUM2_PVGD	0.00	0.00	0.00	0.00	0.00	0.00	0.41	6.23	-5.82	-5.82
AVAADA2_PVGD	0.00	0.00	0.00	0.00	0.00	0.00	0.34	3.17	-2.83	-2.83
KREDL_PVGD	0.00	0.00	0.00	0.00	0.00	0.00	0.64	0.52	0.11	0.11
AYANA_NPKUNTA	0.00	0.00	0.00	0.00	0.00	0.00	0.54	2.80	-2.27	-2.27
SPRNG_NPKUNTA	0.00	0.00	0.00	0.00	0.00	0.00	0.58	2.23	-1.65	-1.65
NTPC STNS-ER	0.00	0.00	0.00	13.78	0.00	-13.78	56.07	23.25	32.82	19.04
MAITHON POWER L	0.00	0.00	0.00	0.45	0.00	-0.45	3.59	3.53	0.06	-0.40
NPGC	0.00	0.00	0.00	0.00	0.00	0.00	7.55	1.91	5.64	5.64
ADHUNIK POWER L	135.05	0.00	-135.05	64.74	0.00	-64.74	3.62	5.25	-1.63	-201.42
CHUZACHEN HEP	0.00	0.00	0.00	1.69	0.00	-1.69	0.42	0.62	-0.21	-1.90
RANGIT HEP	0.00	0.00	0.00	0.00	0.00	0.00	0.84	0.84	0.00	0.00
GMR KAMALANGA	0.00	0.00	0.00	61.21	0.00	-61.21	1.62	7.56	-5.94	-67.15
JITPL	247.20	0.00	-247.20	165.21	0.00	-165.21	3.88	1.81	2.06	-410.35
TEESTA HEP	0.00	0.00	0.00	0.00	0.00	0.00	0.40	4.99	-4.59	-4.59
DAGACHU	16.52	0.00	-16.52	0.00	0.00	0.00	4.00	0.06	3.94	-12.58
JORETHANG	13.91	0.00	-13.91	1.27	0.00	-1.27	3.35	0.38	2.97	-12.21
NEPAL(NVVN)	0.00	221.53	221.53	0.00	0.00	0.00	23.45	2.17	21.28	242.81
BANGLADESH	0.00	22.07	22.07	0.00	0.00	0.00	3.88	0.80	3.08	25.15
HVDC PUS	0.00	0.00	0.00	0.00	0.00	0.00	0.02	0.04	-0.02	-0.02
TEESTA STG3	0.00	0.00	0.00	134.44	0.00	-134.44	8.68	1.34	7.34	-127.10
DIKCHU HEP	0.75	0.00	-0.75	13.08	0.00	-13.08	1.25	1.19	0.06	-13.77
HVDC ALPD	0.00	0.00	0.00	0.00	0.00	0.00	0.03	0.05	-0.02	-0.02
TASHIDENG HEP	10.88	0.00	-10.88	0.98	0.00	-0.98	2.17	0.66	1.51	-10.36
BRBCL,NABINAGAR	0.00	0.00	0.00	0.74	0.00	-0.74	3.01	2.97	0.04	-0.70
MTPS II	0.00	0.00	0.00	0.00	0.00	0.00	2.55	4.97	-2.42	-2.42
TALA HEP	0.00	0.00	0.00	0.00	0.00	0.00	52.66	0.27	52.39	52.39
CHUKHA HEP	0.00	0.00	0.00	0.00	0.00	0.00	5.10	21.50	-16.40	-16.40
KURICHU HEP	0.00	0.00	0.00	0.00	0.00	0.00	32.74	0.05	32.69	32.69
MANGDECHU HEP	0.00	0.00	0.00	0.00	0.00	0.00	4.76	5.36	-0.60	-0.60
NTPC STNS-NER	0.74	0.00	-0.74	63.72	0.00	-63.72	8.48	5.00	3.47	-60.98
NEEPCO STATIONS	29.99	0.00	-29.99	28.04	0.02	-28.02	2.04	6.73	-4.68	-62.69
RANGANADI HEP	0.00	0.00	0.00	0.42	0.00	-0.42	1.72	1.24	0.48	0.06
DOYANG HEP	0.00	0.00	0.00	0.11	0.00	-0.11	0.37	0.56	-0.18	-0.30
ONGC PALATANA	42.38	0.00	-42.38	1.59	0.00	-1.59	1.18	0.95	0.23	-43.74
LOKTAK	0.00	0.00	0.00	0.00	0.00	0.00	0.26	0.40	-0.13	-0.13
PARE HEP	0.00	0.00	0.00	0.14	0.00	-0.14	0.20	0.46	-0.25	-0.40
Source: NLDC										
* in case of a state, the entities which are "selling" also include generators connected to state grid and the entities which are "buying" also include open access consumers.										
** (-) indicates sale and (+) indicates purchase.										
*** Total net includes net of transactions through bilateral, power exchange and DSM										